
Product Name: SLC6A14 Rabbit Polyclonal Antibody**Catalog #: APRab17961**

For research use only.

Summary

Description	Rabbit polyclonal Antibody
Host	Rabbit
Application	WB,IHC,ICC/IF,ELISA
Reactivity	Human,Rat,Mouse
Conjugation	Unconjugated
Modification	Unmodified
Isotype	IgG
Clonality	Polyclonal
Form	Liquid
Concentration	1mg/ml
Storage	Aliquot and store at -20°C (valid for 12 months). Avoid freeze/thaw cycles.
Shipping	Ice bags
Buffer	Liquid in PBS containing 50% glycerol, 0.5% protective protein and 0.02% New type preservative N.
Purification	Affinity purification

Application

Dilution Ratio	WB 1:500-1:2000,IHC 1:100-1:300,ICC/IF 1:50-1:200,ELISA 1:20000-1:40000
Molecular Weight	72kDa

Antigen Information

Gene Name	SLC6A14
Alternative Names	SLC6A14; Sodium- and chloride-dependent neutral and basic amino acid transporter B(0+); Amino acid transporter ATB0+; Solute carrier family 6 member 14
Gene ID	11254.0
SwissProt ID	Q9UN76
Immunogen	Synthesized peptide derived from the C-terminal region of human SLC6A14.

Background

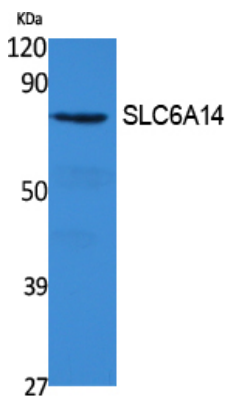
This gene encodes a member of the solute carrier family 6. Members of this family are sodium and chloride dependent

neurotransmitter transporters. The encoded protein transports both neutral and cationic amino acids. This protein may also function as a beta-alanine carrier. Mutations in this gene may be associated with X-linked obesity. A pseudogene of this gene is found on chromosome X.[provided by RefSeq, May 2010],disease:Genetic variations in SLC6A14 may be associated with susceptibility to X-linked obesity (OBX) [MIM:300306]. Obesity has been shown to predispose to disorders such as type 2 diabetes, coronary heart disease, hypertension, osteoarthritis, and certain cancers. Common forms of obesity are most likely caused by multiple genetic and environmental factors, and their interactions.,function:Mediates the uptake of a broad range of neutral and cationic amino acids (with the exception of proline) in a Na(+)/Cl(-)-dependent manner.,miscellaneous:Transport inhibited by BCH (2-aminobicyclo-[2.2.1]-heptane-2-carboxylic acid),similarity:Belongs to the sodium:neurotransmitter symporter (SNF) family.,tissue specificity:Levels are highest in adult and fetal lung, in trachea and salivary gland. Lower levels detected in mammary gland, stomach and pituitary gland, and very low levels in colon, uterus, prostate and testis.,

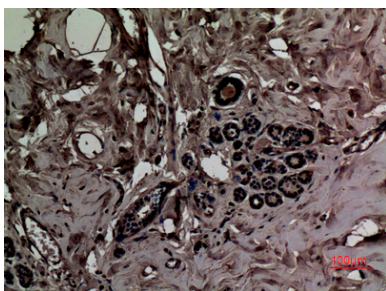
Research Area

Plasma Membrane; Channels; Signal Transduction; Antibodies; New products Recombinant

Image Data



Western Blot analysis of extracts from 293 cells, using SLC6A14 Polyclonal Antibody.. Secondary antibody was diluted at 1:20000



Immunohistochemical analysis of paraffin-embedded human-breast, antibody was diluted at 1:100