
Product Name: Sideroflexin-4 Rabbit Polyclonal Antibody**Catalog #: APRab17888**

For research use only.

Summary

Description	Rabbit polyclonal Antibody
Host	Rabbit
Application	WB,IHC
Reactivity	Human
Conjugation	Unconjugated
Modification	Unmodified
Isotype	IgG
Clonality	Polyclonal
Form	Liquid
Concentration	1mg/ml
Storage	Aliquot and store at -20°C (valid for 12 months). Avoid freeze/thaw cycles.
Shipping	Ice bags
Buffer	Liquid in PBS containing 50% glycerol, 0.5% protective protein and 0.02% New type preservative N.
Purification	Affinity purification

Application

Dilution Ratio	WB 1:500-1:2000,IHC 1:50-1:300
Molecular Weight	37kDa

Antigen Information

Gene Name	SFXN4
Alternative Names	SFXN4; BCRM1; Sideroflexin-4; Breast cancer resistance marker 1
Gene ID	119559.0
SwissProt ID	Q6P4A7
Immunogen	The antiserum was produced against synthesized peptide derived from human SFXN4. AA range:1-50

Background

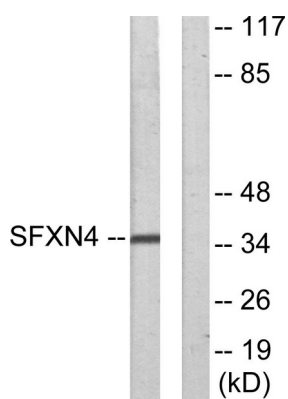
This gene encodes a member of the sideroflexin family. The encoded protein is a transmembrane protein of the inner

mitochondrial membrane, and is required for mitochondrial respiratory homeostasis and erythropoiesis. Mutations in this gene are associated with mitochondriopathy and macrocytic anemia. Alternatively spliced transcript variants have been found in this gene. [provided by RefSeq, Jan 2014],function:Potential iron transporter.,similarity:Belongs to the sideroflexin family.,

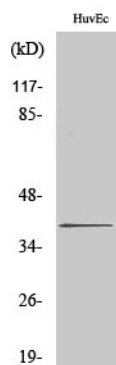
Research Area

Mitochondrial Metabolism; Mitochondrial markers; Metabolism; Pathways and Processes; Cofactors, Vitamins / minerals; Vitamins / minerals; Mitochondrial; Signal Transduction

Image Data



Western blot analysis of lysates from HUVEC cells, using SFXN4 Antibody. The lane on the right is blocked with the synthesized peptide.



Western Blot analysis of various cells using Sideroflexin-4 Polyclonal Antibody