

---

**Product Name: SH3G3 Rabbit Polyclonal Antibody****Catalog #: APRab17842**

For research use only.

**Summary**

<b>Description</b>	Rabbit polyclonal Antibody
<b>Host</b>	Rabbit
<b>Application</b>	WB,ELISA
<b>Reactivity</b>	Human,Rat,Mouse
<b>Conjugation</b>	Unconjugated
<b>Modification</b>	Unmodified
<b>Isotype</b>	IgG
<b>Clonality</b>	Polyclonal
<b>Form</b>	Liquid
<b>Concentration</b>	1mg/ml
<b>Storage</b>	Aliquot and store at -20°C (valid for 12 months). Avoid freeze/thaw cycles.
<b>Shipping</b>	Ice bags
<b>Buffer</b>	Liquid in PBS containing 50% glycerol, and 0.02% New type preservative N.
<b>Purification</b>	Affinity purification

**Application**

<b>Dilution Ratio</b>	WB 1:500-1:2000,ELISA 1:5000-1:20000
<b>Molecular Weight</b>	38kDa

**Antigen Information**

<b>Gene Name</b>	SH3GL3 CNSA3 SH3D2C
<b>Alternative Names</b>	
<b>Gene ID</b>	6457.0
<b>SwissProt ID</b>	Q99963
<b>Immunogen</b>	Synthesized peptide derived from part region of human protein

**Background**

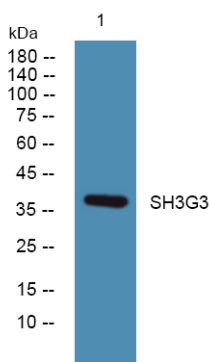
domain:An N-terminal amphipathic helix, the BAR domain and a second amphipathic helix inserted into helix 1 of the BAR domain (N-BAR domain) induce membrane curvature and bind curved membranes.,function:Implicated in endocytosis. May recruit other proteins to membranes with high curvature.,similarity:Belongs to the endophilin family.,similarity:Contains 1 BAR

domain.,similarity:Contains 1 SH3 domain.,subcellular location:Associated with postsynaptic endosomes in hippocampal neurons. Associated with presynaptic endosomes in olfactory neurons.,subunit:Interacts with ARC (By similarity). Interacts with DNM1, SGIP1 and SYNJ1. Interacts with the huntingtin exon 1 protein (HDEX1P) containing a glutamine repeat in the pathological range and promotes formation of insoluble polyglutamine-containing aggregates in vivo.,tissue specificity:Brain and testis.,domain:An N-terminal amphipathic helix, the BAR domain and a second amphipathic helix inserted into helix 1 of the BAR domain (N-BAR domain) induce membrane curvature and bind curved membranes.,function:Implicated in endocytosis. May recruit other proteins to membranes with high curvature.,similarity:Belongs to the endophilin family.,similarity:Contains 1 BAR domain.,similarity:Contains 1 SH3 domain.,subcellular location:Associated with postsynaptic endosomes in hippocampal neurons. Associated with presynaptic endosomes in olfactory neurons.,subunit:Interacts with ARC (By similarity). Interacts with DNM1, SGIP1 and SYNJ1. Interacts with the huntingtin exon 1 protein (HDEX1P) containing a glutamine repeat in the pathological range and promotes formation of insoluble polyglutamine-containing aggregates in vivo.,tissue specificity:Brain and testis.,

## Research Area

Endocytosis;

## Image Data



Western blot analysis of lysates from K562 cells, SH3G3 Rabbit Polyclonal Antibody was diluted at 1:1000, 4° over night