
Product Name: SH3BGRL3 Rabbit Polyclonal Antibody**Catalog #: APRab17840**

For research use only.

Summary

Description	Rabbit polyclonal Antibody
Host	Rabbit
Application	WB,IHC,ICC/IF,ELISA
Reactivity	Human,Mouse,Rat
Conjugation	Unconjugated
Modification	Unmodified
Isotype	IgG
Clonality	Polyclonal
Form	Liquid
Concentration	1mg/ml
Storage	Aliquot and store at -20°C (valid for 12 months). Avoid freeze/thaw cycles.
Shipping	Ice bags
Buffer	Liquid in PBS containing 50% glycerol, 0.5% protective protein and 0.02% New type preservative N.
Purification	Affinity purification

Application

Dilution Ratio WB 1:500-1:2000,IHC 1:100-1:300,ICC/IF 1:200-1:1000,ELISA 1:5000-1:10000

Molecular Weight

Antigen Information

Gene Name	SH3BGRL3 P1725
Alternative Names	SH3 domain-binding glutamic acid-rich-like protein 3 (SH3 domain-binding protein 1;SH3BP-1)
Gene ID	83442.0
SwissProt ID	Q9H299
Immunogen	Synthesized peptide derived from human SH3BGRL3 AA range: 34-84

Background

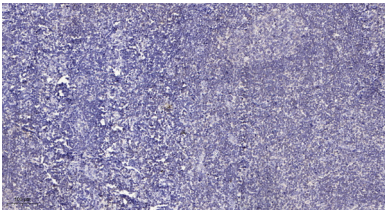
function:Could act as a modulator of glutaredoxin biological activity.,similarity:Belongs to the SH3BGR

family, similarity: Contains 1 glutaredoxin domain, tissue specificity: Ubiquitous, function: Could act as a modulator of glutaredoxin biological activity, similarity: Belongs to the SH3BGR family, similarity: Contains 1 glutaredoxin domain, tissue specificity: Ubiquitous,

Research Area

Cell Biology; Other Antibodies; Oxidative Stress

Image Data



Immunohistochemical analysis of paraffin-embedded human tonsil. 1, Antibody was diluted at 1:200 (4° overnight) . 2, Tris-EDTA, pH9.0 was used for antigen retrieval. 3, Secondary antibody was diluted at 1:200 (room temperature, 30min) .