

---

**Product Name: Sgo2 Rabbit Polyclonal Antibody****Catalog #: APRab17828**

For research use only.

**Summary**

<b>Description</b>	Rabbit polyclonal Antibody
<b>Host</b>	Rabbit
<b>Application</b>	IHC,ICC/IF,ELISA
<b>Reactivity</b>	Human,Rat,Mouse
<b>Conjugation</b>	Unconjugated
<b>Modification</b>	Unmodified
<b>Isotype</b>	IgG
<b>Clonality</b>	Polyclonal
<b>Form</b>	Liquid
<b>Concentration</b>	1mg/ml
<b>Storage</b>	Aliquot and store at -20°C (valid for 12 months). Avoid freeze/thaw cycles.
<b>Shipping</b>	Ice bags
<b>Buffer</b>	Liquid in PBS containing 50% glycerol, 0.5% protective protein and 0.02% New type preservative N.
<b>Purification</b>	Affinity purification

**Application**

**Dilution Ratio** IHC 1:100-1:300,ICC/IF 1:50-1:200,ELISA 1:5000-1:20000

**Molecular Weight**

**Antigen Information**

<b>Gene Name</b>	SGOL2
<b>Alternative Names</b>	SGOL2; Shugoshin-like 2; Shugoshin-2; Sgo2; Tripin
<b>Gene ID</b>	151246.0
<b>SwissProt ID</b>	Q562F6
<b>Immunogen</b>	The antiserum was produced against synthesized peptide derived from human SGOL2. AA range:681-730

**Background**

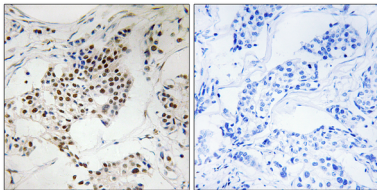
function:During meiosis, protects centromeric cohesion complexes until metaphase II/anaphase II transition, preventing

premature release of meiosis-specific REC8 cohesin complexes from anaphase I centromeres. Is thus essential for an accurate gametogenesis (By similarity). May act by targeting PPP2CA to centromeres, thus leading to cohesin dephosphorylation.,PTM:Phosphorylated upon DNA damage, probably by ATM or ATR.,sequence caution:Contaminating sequence. Potential poly-A sequence.,similarity:Belongs to the shugoshin family.,subcellular location:In HeLa cells, localizes at centromeres throughout prophase until metaphase and disappears at anaphase.,subunit:Directly interacts with PPP2CA.,function:During meiosis, protects centromeric cohesion complexes until metaphase II/anaphase II transition, preventing premature release of meiosis-specific REC8 cohesin complexes from anaphase I centromeres. Is thus essential for an accurate gametogenesis (By similarity). May act by targeting PPP2CA to centromeres, thus leading to cohesin dephosphorylation.,PTM:Phosphorylated upon DNA damage, probably by ATM or ATR.,sequence caution:Contaminating sequence. Potential poly-A sequence.,similarity:Belongs to the shugoshin family.,subcellular location:In HeLa cells, localizes at centromeres throughout prophase until metaphase and disappears at anaphase.,subunit:Directly interacts with PPP2CA.,

## Research Area

Epigenetics and Nuclear Signaling; Cell cycle; Chromosome Structure; Centromere; Cell Biology; Cell Division

## Image Data



Immunohistochemistry analysis of paraffin-embedded human breast carcinoma, using SGOL2 Antibody. The picture on the right is blocked with the synthesized peptide.