

---

**Product Name: SFRS15 Rabbit Polyclonal Antibody****Catalog #: APRab17799**

For research use only.

**Summary**

<b>Description</b>	Rabbit polyclonal Antibody
<b>Host</b>	Rabbit
<b>Application</b>	WB,IHC,ICC/IF,ELISA
<b>Reactivity</b>	Human,Mouse,Rat
<b>Conjugation</b>	Unconjugated
<b>Modification</b>	Unmodified
<b>Isotype</b>	IgG
<b>Clonality</b>	Polyclonal
<b>Form</b>	Liquid
<b>Concentration</b>	1mg/ml
<b>Storage</b>	Aliquot and store at -20°C (valid for 12 months). Avoid freeze/thaw cycles.
<b>Shipping</b>	Ice bags
<b>Buffer</b>	Liquid in PBS containing 50% glycerol, 0.5% protective protein and 0.02% New type preservative N.
<b>Purification</b>	Affinity purification

**Application**

<b>Dilution Ratio</b>	WB 1:500-1:2000,IHC 1:100-1:300,ICC/IF 1:50-1:200,ELISA 1:20000-1:40000
<b>Molecular Weight</b>	140kDa

**Antigen Information**

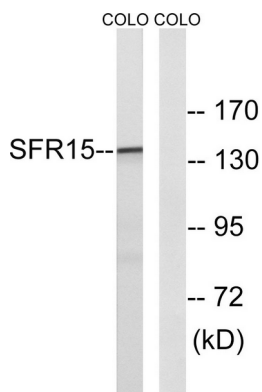
<b>Gene Name</b>	SCAF4
<b>Alternative Names</b>	SCAF4; KIAA1172; SFRS15; Splicing factor; arginine/serine-rich 15; CTD-binding SR-like protein RA4; SR-related and CTD-associated factor 4
<b>Gene ID</b>	57466.0
<b>SwissProt ID</b>	O95104
<b>Immunogen</b>	The antiserum was produced against synthesized peptide derived from human SFRS15. AA range:601-650

**Background**

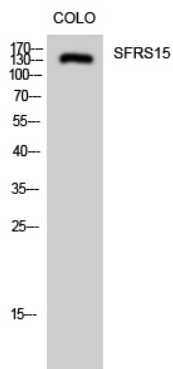
This gene likely encodes a member of the arginine/serine-rich splicing factor family. A similar protein in Rat appears to bind the large subunit of RNA polymerase II and provide a link between transcription and pre-mRNA splicing. Alternatively spliced transcript variants have been described. [provided by RefSeq, Feb 2009],function:May act to physically and functionally link transcription and pre-mRNA processing.,similarity:Belongs to the splicing factor SR family.,similarity:Contains 1 CID domain.,similarity:Contains 1 RRM (RNA recognition motif) domain.,subunit:Interacts with the repetitive C-terminal domain (CTD) of RNA polymerase II.,

## Research Area

## Image Data



Western blot analysis of lysates from COLO cells, using SFRS15 Antibody. The lane on the right is blocked with the synthesized peptide.



Western Blot analysis of COLO cells using SFRS15 Polyclonal Antibody diluted at 1:2000.