
Product Name: SFRS14 Rabbit Polyclonal Antibody**Catalog #: APRab17798**

For research use only.

Summary

Description	Rabbit polyclonal Antibody
Host	Rabbit
Application	WB,IHC,ELISA
Reactivity	Human,Rat,Mouse
Conjugation	Unconjugated
Modification	Unmodified
Isotype	IgG
Clonality	Polyclonal
Form	Liquid
Concentration	1mg/ml
Storage	Aliquot and store at -20°C (valid for 12 months). Avoid freeze/thaw cycles.
Shipping	Ice bags
Buffer	Liquid in PBS containing 50% glycerol, 0.5% protective protein and 0.02% New type preservative N.
Purification	Affinity purification

Application

Dilution Ratio	WB 1:500-1:2000,IHC 1:50-1:300,ELISA 1:2000-1:20000
Molecular Weight	120kDa

Antigen Information

Gene Name	SUGP2
Alternative Names	SUGP2; KIAA0365; SFRS14; SURP and G-patch domain-containing protein 2; Arginine/serine-rich-splicing factor 14; Splicing factor; arginine/serine-rich 14
Gene ID	10147.0
SwissProt ID	Q8IX01
Immunogen	Synthesized peptide derived from SFRS14 . at AA range: 260-340

Background

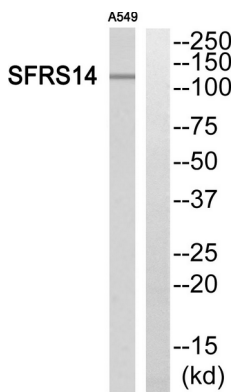
This gene encodes a member of the arginine/serine-rich family of splicing factors. The encoded protein functions in mRNA

processing. Alternatively spliced transcript variants have been described. [provided by RefSeq, Feb 2009],function:May play a role in mRNA splicing .,PTM:Phosphorylated upon DNA damage, probably by ATM or ATR.,similarity:Contains 1 G-patch domain.,similarity:Contains 2 SURP motif repeats.,tissue specificity:Detected in adult testis, and in fetal brain and kidney.,

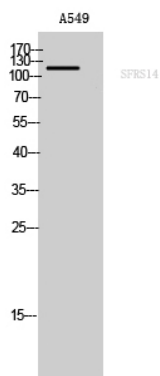
Research Area

Epigenetics and Nuclear Signaling; DNA / RNA; RNA Processing; Splicing

Image Data



Western blot analysis of SFRS14 Antibody. The lane on the right is blocked with the SFRS14 peptide.



Western Blot analysis of A549 cells using SFRS14 Polyclonal Antibody.