
Product Name: SFRS11 Rabbit Polyclonal Antibody**Catalog #: APRab17797**

For research use only.

Summary

Description	Rabbit polyclonal Antibody
Host	Rabbit
Application	WB,IHC,ELISA
Reactivity	Human,Mouse
Conjugation	Unconjugated
Modification	Unmodified
Isotype	IgG
Clonality	Polyclonal
Form	Liquid
Concentration	1mg/ml
Storage	Aliquot and store at -20°C (valid for 12 months). Avoid freeze/thaw cycles.
Shipping	Ice bags
Buffer	Liquid in PBS containing 50% glycerol, 0.5% protective protein and 0.02% New type preservative N.
Purification	Affinity purification

Application

Dilution Ratio	WB 1:500-1:2000,IHC 1:50-1:300,ELISA 1:2000-1:20000
Molecular Weight	54kDa

Antigen Information

Gene Name	SRSF11
Alternative Names	SRSF11; SFRS11; Serine/arginine-rich splicing factor 11; Arginine-rich 54 kDa nuclear protein; p54; Splicing factor; arginine/serine-rich 11
Gene ID	9295.0
SwissProt ID	Q05519
Immunogen	The antiserum was produced against synthesized peptide derived from human SFRS11. AA range:211-260

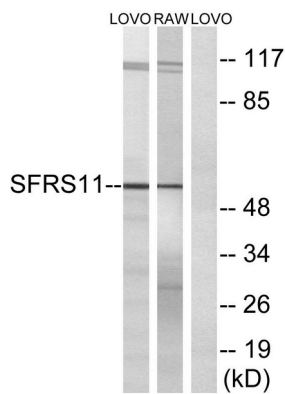
Background

This gene encodes 54-kD nuclear protein that contains an arginine/serine-rich region similar to segments found in pre-mRNA splicing factors. Although the function of this protein is not yet known, structure and immunolocalization data suggest that it may play a role in pre-mRNA processing. Alternative splicing results in multiple transcript variants encoding different proteins. In addition, a pseudogene of this gene has been found on chromosome 12.[provided by RefSeq, Sep 2010],function:May function in pre-mRNA splicing.,similarity:Belongs to the splicing factor SR family.,similarity:Contains 1 RRM (RNA recognition motif) domain.,subcellular location:Colocalizes with spliceosome components.,subunit:Interacts with PUF60.,

Research Area

Epigenetics and Nuclear Signaling; DNA / RNA; RNA Processing Splicing

Image Data



Western blot analysis of lysates from LOVO and RAW264.7 cells, using SFRS11 Antibody. The lane on the right is blocked with the synthesized peptide.