
Product Name: Serpin A11 Rabbit Polyclonal Antibody**Catalog #: APRab17763**

For research use only.

Summary

Description	Rabbit polyclonal Antibody
Host	Rabbit
Application	WB,IHC
Reactivity	Human,Rat,Mouse
Conjugation	Unconjugated
Modification	Unmodified
Isotype	IgG
Clonality	Polyclonal
Form	Liquid
Concentration	1mg/ml
Storage	Aliquot and store at -20°C (valid for 12 months). Avoid freeze/thaw cycles.
Shipping	Ice bags
Buffer	Liquid in PBS containing 50% glycerol, 0.5% protective protein and 0.02% New type preservative N.
Purification	Affinity purification

Application

Dilution Ratio	WB 1:500-1:2000,IHC 1:50-1:300
Molecular Weight	47kDa

Antigen Information

Gene Name	SERPINA11
Alternative Names	SERPINA11; Serpin A11
Gene ID	256394.0
SwissProt ID	Q86U17
Immunogen	The antiserum was produced against synthesized peptide derived from human SERPINA11. AA range:191-240

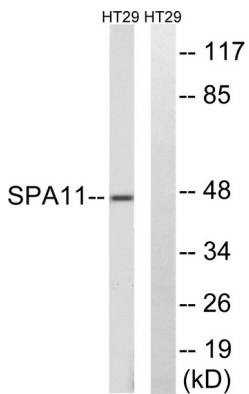
Background

similarity:Belongs to the serpin family.,similarity:Belongs to the serpin family.,

Research Area

Immunology; Adaptive Immunity; B Cells; Non-CD; Cancer; Oncoproteins/suppressors; Oncoproteins; Cell Biology; Proteolysis / Ubiquitin; Protease inhibitors; Serine protease inhibitors; SERPINS

Image Data



Western blot analysis of lysates from HT-29 cells, using SERPINA11 Antibody. The lane on the right is blocked with the synthesized peptide.