

---

**Product Name: Serinc1 Rabbit Polyclonal Antibody****Catalog #: APRab17752**

For research use only.

**Summary**

<b>Description</b>	Rabbit polyclonal Antibody
<b>Host</b>	Rabbit
<b>Application</b>	WB,IHC,ICC/IF,ELISA
<b>Reactivity</b>	Human,Mouse,Rat
<b>Conjugation</b>	Unconjugated
<b>Modification</b>	Unmodified
<b>Isotype</b>	IgG
<b>Clonality</b>	Polyclonal
<b>Form</b>	Liquid
<b>Concentration</b>	1mg/ml
<b>Storage</b>	Aliquot and store at -20°C (valid for 12 months). Avoid freeze/thaw cycles.
<b>Shipping</b>	Ice bags
<b>Buffer</b>	Liquid in PBS containing 50% glycerol, 0.5% protective protein and 0.02% New type preservative N.
<b>Purification</b>	Affinity purification

**Application**

<b>Dilution Ratio</b>	WB 1:500-1:2000,IHC 1:100-1:300,ICC/IF 1:200-1:1000,ELISA 1:10000-1:20000
<b>Molecular Weight</b>	48kDa

**Antigen Information**

<b>Gene Name</b>	SERINC1
<b>Alternative Names</b>	SERINC1; KIAA1253; TDE1L; TDE2; Serine incorporator 1; Tumor differentially expressed protein 1-like; Tumor differentially expressed protein 2
<b>Gene ID</b>	57515.0
<b>SwissProt ID</b>	Q9NRX5
<b>Immunogen</b>	The antiserum was produced against synthesized peptide derived from human SERC1. AA range:381-430

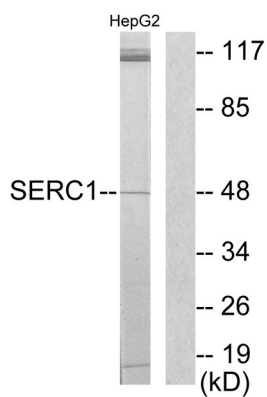
**Background**

function:Enhances the incorporation of serine into phosphatidylserine and sphingolipids.,similarity:Belongs to the TDE1 family.,subunit:Interacts with SPTLC1.,function:Enhances the incorporation of serine into phosphatidylserine and sphingolipids.,similarity:Belongs to the TDE1 family.,subunit:Interacts with SPTLC1.,

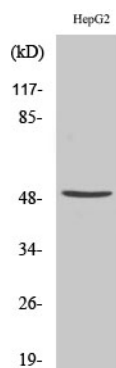
## Research Area

Lipid metabolism; Metabolism; Pathways and Processes; Metabolic signaling pathways; Amino acid metabolism; Amino Acids; Signal Transduction

## Image Data



Western blot analysis of lysates from HepG2 cells, using SERC1 Antibody. The lane on the right is blocked with the synthesized peptide.



Western Blot analysis of various cells using Serinc1 Polyclonal Antibody