

---

**Product Name: Septin 8 Rabbit Polyclonal Antibody****Catalog #: APRab17746**

For research use only.

**Summary**

|                      |   |
|----------------------|---|
| <b>Description</b>   | Rabbit polyclonal Antibody  |
| <b>Host</b>          | Rabbit  |
| <b>Application</b>   | WB,IHC,ELISA  |
| <b>Reactivity</b>    | Human,Mouse,Rat   |
| <b>Conjugation</b>   | Unconjugated  |
| <b>Modification</b>  | Unmodified  |
| <b>Isotype</b>       | IgG   |
| <b>Clonality</b>     | Polyclonal  |
| <b>Form</b>          | Liquid  |
| <b>Concentration</b> | 1mg/ml  |
| <b>Storage</b>       | Aliquot and store at -20°C (valid for 12 months). Avoid freeze/thaw cycles.                       |
| <b>Shipping</b>      | Ice bags  |
| <b>Buffer</b>        | Liquid in PBS containing 50% glycerol, 0.5% protective protein and 0.02% New type preservative N. |
| <b>Purification</b>  | Affinity purification   |

**Application**

|                         |   |
|-------------------------|---|
| <b>Dilution Ratio</b>   | WB 1:500-1:2000,IHC 1:50-1:300,ELISA 1:2000-1:20000 |
| <b>Molecular Weight</b> | 50kDa   |

**Antigen Information**

|                          |   |
|--------------------------|---|
| <b>Gene Name</b>         | SEPT8   |
| <b>Alternative Names</b> | SEPT8; KIAA0202; Septin-8   |
| <b>Gene ID</b>           | 23176.0   |
| <b>SwissProt ID</b>      | Q92599  |
| <b>Immunogen</b>         | The antiserum was produced against synthesized peptide derived from human SEPT8. AA range:170-219 |

**Background**

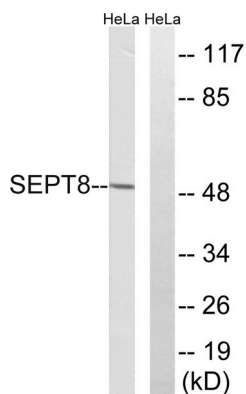
septin 8(SEPT8) Homo sapiens This gene is a member of the septin family of nucleotide binding proteins, originally described

in yeast as cell division cycle regulatory proteins. Septins are highly conserved in yeast, Drosophila, and mouse, and appear to regulate cytoskeletal organization. Disruption of septin function disturbs cytokinesis and results in large multinucleate or polyploid cells. Multiple alternatively spliced transcript variants encoding different isoforms have been found for this gene. [provided by RefSeq, Jul 2014],similarity:Belongs to the septin family.,subunit:Interacts with SEPT5.,tissue specificity:Expressed in brain, heart and platelets; most abundant in aorta. Isoform 2 is expressed at low levels in specific brain areas, such as occipital pole, frontal lobe, temporal lobe and putamen, whereas isoforms 1 and 3 are highly expressed in these areas. In prostate, testis and ovary, isoform 2 is highly expressed, while isoforms 1 and 3 found at low levels.,

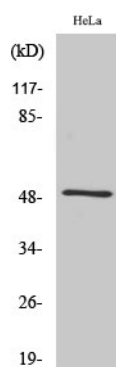
## Research Area

Cell Biology; Cell Cycle; Cell Division; Cytokinesis

## Image Data



Western blot analysis of lysates from HeLa cells, using SEPT8 Antibody. The lane on the right is blocked with the synthesized peptide.



Western Blot analysis of various cells using Septin 8 Polyclonal Antibody diluted at 1 : 2000