

Product Name: Septin 3 Rabbit Polyclonal Antibody**Catalog #: APRab17741**

For research use only.

Summary

Description	Rabbit polyclonal Antibody
Host	Rabbit
Application	WB,IHC,ELISA
Reactivity	Human,Mouse,Rat
Conjugation	Unconjugated
Modification	Unmodified
Isotype	IgG
Clonality	Polyclonal
Form	Liquid
Concentration	1mg/ml
Storage	Aliquot and store at -20°C (valid for 12 months). Avoid freeze/thaw cycles.
Shipping	Ice bags
Buffer	Liquid in PBS containing 50% glycerol, 0.5% protective protein and 0.02% New type preservative N.
Purification	Affinity purification

Application

Dilution Ratio	WB 1:500-1:2000,IHC 1:50-1:300,ELISA 1:2000-1:20000
Molecular Weight	41kDa

Antigen Information

Gene Name	SEPT3
Alternative Names	SEPT3; SEP3; Neuronal-specific septin-3
Gene ID	55964.0
SwissProt ID	Q9UH03
Immunogen	The antiserum was produced against synthesized peptide derived from human SEPT3. AA range:136-185

Background

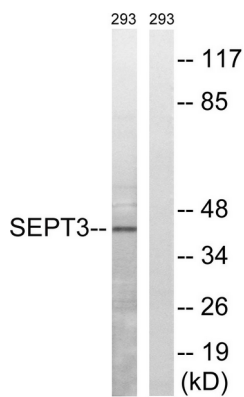
septin 3(SEPT3) Homo sapiens This gene belongs to the septin family of GTPases. Members of this family are required for

cytokinesis. Expression is upregulated by retinoic acid in a human teratocarcinoma cell line. The specific function of this gene has not been determined. Alternative splicing of this gene results in two transcript variants encoding different isoforms. [provided by RefSeq, Jul 2008],function:Involved in cytokinesis .,induction:Up-regulated during neuronal differentiation.,PTM:Phosphorylated by PKG on serine residues. Phosphorylated by PKG on Ser-91.,similarity:Belongs to the septin family.,subcellular location:Localizes in synaptosomes at dendritic synapses of neurons. Localizes within presynaptic terminals of neurons.,subunit:May assemble into a multicomponent structure.,tissue specificity:Brain specific.,

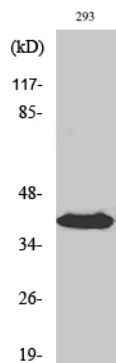
Research Area

Cell Biology; Cell Cycle; Cell Division; Cytokinesis

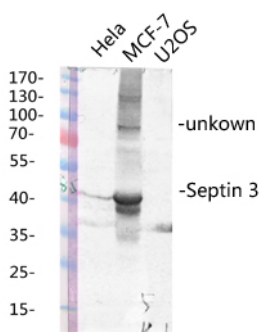
Image Data



Western blot analysis of lysates from 293 cells, using SEPT3 Antibody. The lane on the right is blocked with the synthesized peptide.



Western Blot analysis of various cells using Septin 3 Polyclonal Antibody diluted at 1 : 1000



Western blot analysis of various lysis using Septin 3 Polyclonal Antibody diluted at 1 : 1000. Secondary antibody was diluted at 1:20000

