
Product Name: Septin 2 Rabbit Polyclonal Antibody**Catalog #: APRab17740**

For research use only.

Summary

Description	Rabbit polyclonal Antibody
Host	Rabbit
Application	WB,IHC
Reactivity	Human,Mouse,Rat
Conjugation	Unconjugated
Modification	Unmodified
Isotype	IgG
Clonality	Polyclonal
Form	Liquid
Concentration	1mg/ml
Storage	Aliquot and store at -20°C (valid for 12 months). Avoid freeze/thaw cycles.
Shipping	Ice bags
Buffer	Liquid in PBS containing 50% glycerol, 0.5% protective protein and 0.02% New type preservative N.
Purification	Affinity purification

Application

Dilution Ratio	WB 1:500-1:2000,IHC 1:50-1:300
Molecular Weight	41kDa

Antigen Information

Gene Name	SEPT2
Alternative Names	SEPT2; DIFF6; KIAA0158; NEDD5; Septin-2; Neural precursor cell expressed developmentally down-regulated protein 5; NEDD-5
Gene ID	4735.0
SwissProt ID	Q15019
Immunogen	The antiserum was produced against synthesized peptide derived from human SEPT2. AA range:103-152

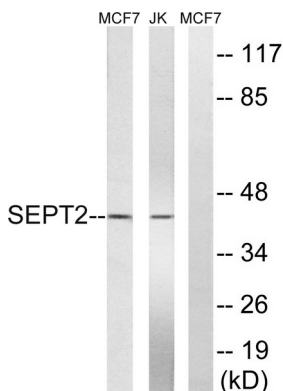
Background

function:Required for normal progress through mitosis. Involved in cytokinesis.,similarity:Belongs to the septin family.,subcellular location:Accumulates near the contractile ring from anaphase through telophase, and finally condenses into the midbody. In interphase and postmitotic cells, localised to fibrous or granular structures, depending on the growth state of the cell.,subunit:Monomer, and homodimer. Nucleotide binding promotes dimerization. Heterohexamer composed of two heterotrimers containing one copy each of SEPT2, SEPT6 and SEPT7. The asymmetrical heterotrimers associate head-to-head to form a hexameric unit that assembles into filaments.,function:Required for normal progress through mitosis. Involved in cytokinesis.,similarity:Belongs to the septin family.,subcellular location:Accumulates near the contractile ring from anaphase through telophase, and finally condenses into the midbody. In interphase and postmitotic cells, localised to fibrous or granular structures, depending on the growth state of the cell.,subunit:Monomer, and homodimer. Nucleotide binding promotes dimerization. Heterohexamer composed of two heterotrimers containing one copy each of SEPT2, SEPT6 and SEPT7. The asymmetrical heterotrimers associate head-to-head to form a hexameric unit that assembles into filaments.,

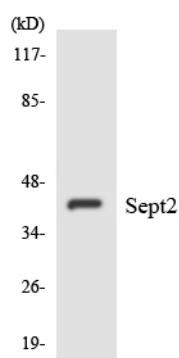
Research Area

Cell Biology; Cell Cycle; Cell Division; Cytokinesis

Image Data



Western blot analysis of lysates from Jurkat and MCF-7 cells, using SEPT2 Antibody. The lane on the right is blocked with the synthesized peptide.



Western blot analysis of the lysates from HepG2 cells using SEPT2 antibody.