
Product Name: SENP5 Rabbit Polyclonal Antibody**Catalog #: APRab17728**

For research use only.

Summary

Description	Rabbit polyclonal Antibody
Host	Rabbit
Application	WB,IHC,ICC/IF,ELISA
Reactivity	Human,Mouse,Monkey
Conjugation	Unconjugated
Modification	Unmodified
Isotype	IgG
Clonality	Polyclonal
Form	Liquid
Concentration	1mg/ml
Storage	Aliquot and store at -20°C (valid for 12 months). Avoid freeze/thaw cycles.
Shipping	Ice bags
Buffer	Liquid in PBS containing 50% glycerol, 0.5% protective protein and 0.02% New type preservative N.
Purification	Affinity purification

Application

Dilution Ratio	WB 1:500-1:2000,IHC 1:100-1:300,ICC/IF 1:50-1:200,ELISA 1:10000-1:20000
Molecular Weight	86kDa

Antigen Information

Gene Name	SENP5
Alternative Names	SENP5; FKSG45; Sentrin-specific protease 5; Sentrin/SUMO-specific protease SENP5
Gene ID	205564.0
SwissProt ID	Q96HI0
Immunogen	The antiserum was produced against synthesized peptide derived from human SENP5. AA range:651-700

Background

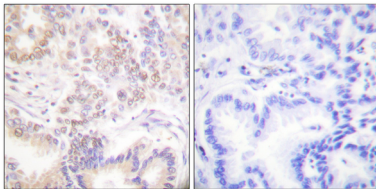
The reversible posttranslational modification of proteins by the addition of small ubiquitin-like SUMO proteins (see SUMO1;

MIM 601912) is required for numerous biologic processes. SUMO-specific proteases, such as SENP5, are responsible for the initial processing of SUMO precursors to generate a C-terminal diglycine motif required for the conjugation reaction. They also have isopeptidase activity for the removal of SUMO from high molecular mass SUMO conjugates (Di Bacco et al., 2006 [PubMed 16738315]).[supplied by OMIM, Jun 2009],function:Protease that catalyzes two essential functions in the SUMO pathway: processing of full-length SUMO3 to its mature form and deconjugation of SUMO2 and SUMO3 from targeted proteins. Has weak proteolytic activity against full-length SUMO1 or SUMO1 conjugates. Required for cell division.,similarity:Belongs to the peptidase C48 family.,

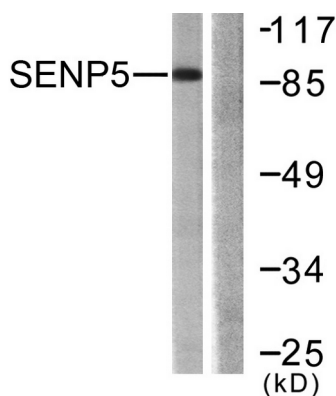
Research Area

Cell Biology; Proteolysis / Ubiquitin; Proteasome / Ubiquitin; Sumo

Image Data



Immunohistochemistry analysis of paraffin-embedded human lung carcinoma tissue, using SENP5 Antibody. The picture on the right is blocked with the synthesized peptide.



Western blot analysis of lysates from COS7 cells, using SENP5 Antibody. The lane on the right is blocked with the synthesized peptide.



Western Blot analysis of various cells using SENP5 Polyclonal Antibody.