

Product Name: SEMA3F Rabbit Polyclonal Antibody**Catalog #: APRab17716**

For research use only.

Summary

Description	Rabbit polyclonal Antibody
Host	Rabbit
Application	WB,IHC,ELISA
Reactivity	Human,Mouse,Rat
Conjugation	Unconjugated
Modification	Unmodified
Isotype	IgG
Clonality	Polyclonal
Form	Liquid
Concentration	1mg/ml
Storage	Aliquot and store at -20°C (valid for 12 months). Avoid freeze/thaw cycles.
Shipping	Ice bags
Buffer	Liquid in PBS containing 50% glycerol, 0.5% protective protein and 0.02% New type preservative N.
Purification	Affinity purification

Application

Dilution Ratio	WB 1:500-1:2000,IHC 1:50-1:300,ELISA 1:2000-1:20000
Molecular Weight	88kDa

Antigen Information

Gene Name	SEMA3F
Alternative Names	SEMA3F; Semaphorin-3F; Sema III/F; Semaphorin IV; Sema IV
Gene ID	6405.0
SwissProt ID	Q13275
Immunogen	The antiserum was produced against synthesized peptide derived from human SEMA3F. AA range:734-783

Background

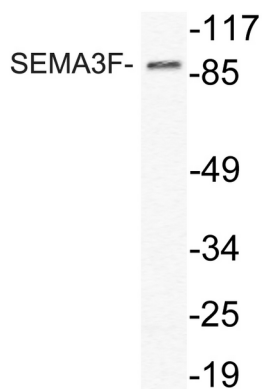
This gene encodes a member of the semaphorin III family of secreted signaling proteins that are involved in axon guidance

during neuronal development. The encoded protein contains an N-terminal Sema domain, an immunoglobulin loop and a C-terminal basic domain. This gene is expressed by the endothelial cells where it was found to act in an autocrine fashion to induce apoptosis, inhibit cell proliferation and survival, and function as an anti-tumorigenic agent. Alternative splicing results in multiple transcript variants encoding different isoforms. [provided by RefSeq, Jan 2016],developmental stage:Detected as early as embryonic day 10.,function:May play a role in cell motility and cell adhesion.,similarity:Belongs to the semaphorin family.,similarity:Contains 1 Ig-like C2-type (immunoglobulin-like) domain.,similarity:Contains 1 Sema domain.,tissue specificity:Expressed abundantly but differentially in a variety of neural and nonneural tissues. There is high expression in mammary gland, kidney, fetal brain, and lung and lower expression in heart and liver.,

Research Area

Axon guidance;

Image Data



Western blot analysis of lysate from HeLa cells, using SEMA3F antibody.