
Product Name: Secretogranin-1 Rabbit Polyclonal Antibody**Catalog #: APRab17700**

For research use only.

Summary

Description	Rabbit polyclonal Antibody
Host	Rabbit
Application	WB,IHC,ICC/IF
Reactivity	Human,Mouse,Rat
Conjugation	Unconjugated
Modification	Unmodified
Isotype	IgG
Clonality	Polyclonal
Form	Liquid
Concentration	1mg/ml
Storage	Aliquot and store at -20°C (valid for 12 months). Avoid freeze/thaw cycles.
Shipping	Ice bags
Buffer	Liquid in PBS containing 50% glycerol, 0.5% protective protein and 0.02% New type preservative N.
Purification	Affinity purification

Application

Dilution Ratio	WB 1:500-1:2000,IHC 1:50-1:200,ICC/IF 1:50-1:200
Molecular Weight	78kDa

Antigen Information

Gene Name	CHGB SCG1
Alternative Names	Secretogranin-1 (Chromogranin-B;CgB;Secretogranin I;Sgl) [Cleaved into: GAWK peptide; CCB peptide]
Gene ID	1114.0
SwissProt ID	P05060
Immunogen	Synthesized peptide derived from human Secretogranin-1

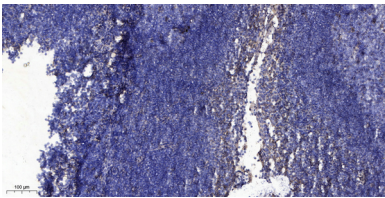
Background

This gene encodes a tyrosine-sulfated secretory protein abundant in peptidergic endocrine cells and neurons. This protein may

serve as a precursor for regulatory peptides. [provided by RefSeq, Jan 2009],function:Secretogranin-1 is a neuroendocrine secretory granule protein, which may be the precursor for other biologically active peptides.,PTM:Extensively processed by limited proteolysis at conserved basic residues. Alternative processing are seen in different tissues.,similarity:Belongs to the chromogranin/secretogranin protein family.,subcellular location:Neuroendocrine and endocrine secretory granules.,tissue specificity:Expressed in the adrenal medulla, and in pheochromocytoma. Not expressed in liver.,

Research Area

Image Data



Immunohistochemical analysis of paraffin-embedded human tonsil. 1, Antibody was diluted at 1:200 (4° overnight) . 2, Tris-EDTA,pH9.0 was used for antigen retrieval. 3,Secondary antibody was diluted at 1:200 (room temperature, 30min) .