

---

**Product Name: Secretin Rabbit Polyclonal Antibody****Catalog #: APRab17698**

For research use only.

**Summary**

<b>Description</b>	Rabbit polyclonal Antibody
<b>Host</b>	Rabbit
<b>Application</b>	WB,IHC,ELISA
<b>Reactivity</b>	Human,Rat,Mouse
<b>Conjugation</b>	Unconjugated
<b>Modification</b>	Unmodified
<b>Isotype</b>	IgG
<b>Clonality</b>	Polyclonal
<b>Form</b>	Liquid
<b>Concentration</b>	1mg/ml
<b>Storage</b>	Aliquot and store at -20°C (valid for 12 months). Avoid freeze/thaw cycles.
<b>Shipping</b>	Ice bags
<b>Buffer</b>	Liquid in PBS containing 50% glycerol, 0.5% protective protein and 0.02% New type preservative N.
<b>Purification</b>	Affinity purification

**Application**

<b>Dilution Ratio</b>	WB 1:500-1:2000,IHC 1:50-1:300,ELISA 1:2000-1:20000
<b>Molecular Weight</b>	13kDa

**Antigen Information**

<b>Gene Name</b>	SCT
<b>Alternative Names</b>	Secretin
<b>Gene ID</b>	6343.0
<b>SwissProt ID</b>	P09683
<b>Immunogen</b>	Synthesized peptide derived from human Secretin

**Background**

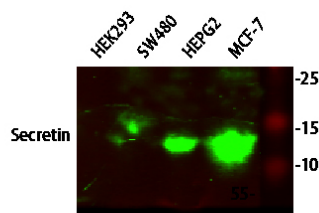
This gene encodes a member of the glucagon family of peptides. The encoded preproprotein is secreted by endocrine S cells in the proximal small intestinal mucosa as a prohormone, then proteolytically processed to generate the mature peptide

hormone. The release of this active peptide hormone is stimulated by either fatty acids or acidic pH in the duodenum. This hormone stimulates the secretion of bile and bicarbonate in the duodenum, pancreatic and biliary ducts. [provided by RefSeq, Feb 2016],function:Stimulates formation of NaHCO(3)-rich pancreatic juice and secretion of NaHCO(3)-rich bile and inhibits HCl production by the stomach.,online information:Secretin entry,similarity:Belongs to the glucagon family.,

## Research Area

Signal Transduction; Growth Factors/Hormones; Hormones; Tags & Cell Markers; Cell Type Markers; Other Cell Types

## Image Data



Western blot analysis of various lysates, Secretin Rabbit Polyclonal Antibody was diluted at 1:1000, 4° over night, secondary antibody was diluted at 1:10000, 37° 1hour.