

**Product Name: Sec23B Rabbit Polyclonal Antibody****Catalog #: APRab17692**

For research use only.

**Summary**

|                      |   |
|----------------------|---|
| <b>Description</b>   | Rabbit polyclonal Antibody  |
| <b>Host</b>          | Rabbit  |
| <b>Application</b>   | WB,IHC,ELISA  |
| <b>Reactivity</b>    | Human,Mouse   |
| <b>Conjugation</b>   | Unconjugated  |
| <b>Modification</b>  | Unmodified  |
| <b>Isotype</b>       | IgG   |
| <b>Clonality</b>     | Polyclonal  |
| <b>Form</b>          | Liquid  |
| <b>Concentration</b> | 1mg/ml  |
| <b>Storage</b>       | Aliquot and store at -20°C (valid for 12 months). Avoid freeze/thaw cycles.                       |
| <b>Shipping</b>      | Ice bags  |
| <b>Buffer</b>        | Liquid in PBS containing 50% glycerol, 0.5% protective protein and 0.02% New type preservative N. |
| <b>Purification</b>  | Affinity purification   |

**Application**

|                         |   |
|-------------------------|---|
| <b>Dilution Ratio</b>   | WB 1:500-1:2000,IHC 1:50-1:300,ELISA 1:2000-1:20000 |
| <b>Molecular Weight</b> | 86kDa   |

**Antigen Information**

|                          |  |
|--------------------------|--|
| <b>Gene Name</b>         | SEC23B   |
| <b>Alternative Names</b> | SEC23B; Protein transport protein Sec23B; SEC23-related protein B                                  |
| <b>Gene ID</b>           | 10483.0  |
| <b>SwissProt ID</b>      | Q15437   |
| <b>Immunogen</b>         | The antiserum was produced against synthesized peptide derived from human Sec23B. AA range:495-544 |

**Background**

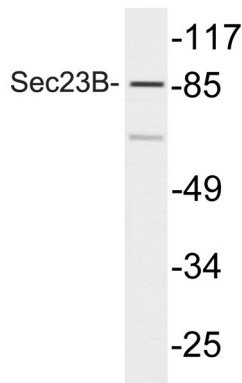
The protein encoded by this gene is a member of the SEC23 subfamily of the SEC23/SEC24 family, which is involved in vesicle

trafficking. The encoded protein has similarity to yeast Sec23p component of COPII. COPII is the coat protein complex responsible for vesicle budding from the ER. The function of this gene product has been implicated in cargo selection and concentration. Multiple alternatively spliced transcript variants have been identified in this gene. [provided by RefSeq, Feb 2010],function:Component of the COPII coat, that covers ER-derived vesicles involved in transport from the endoplasmic reticulum to the Golgi apparatus. COPII acts in the cytoplasm to promote the transport of secretory, plasma membrane, and vacuolar proteins from the endoplasmic reticulum to the Golgi complex.,similarity:Belongs to the SEC23/SEC24 family. SEC23 subfamily.,subunit:COPII is composed of at least five proteins: the Sec23/24 complex, the Sec13/31 complex and Sar1.,

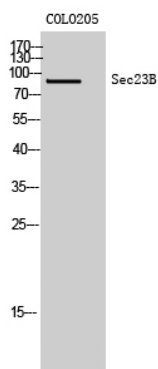
## Research Area

ER Proteins; Signal Transduction; Protein Trafficking; Vesicle Transport; Coat Proteins

## Image Data



Western blot analysis of lysate from COLO205 cells, using Sec23B antibody.



Western Blot analysis of COLO205 cells using Sec23B Polyclonal Antibody