
Product Name: SCYL1BP1 Rabbit Polyclonal Antibody**Catalog #: APRab17673**

For research use only.

Summary

Description	Rabbit polyclonal Antibody
Host	Rabbit
Application	WB,IHC,ELISA
Reactivity	Human,Mouse,Rat
Conjugation	Unconjugated
Modification	Unmodified
Isotype	IgG
Clonality	Polyclonal
Form	Liquid
Concentration	1mg/ml
Storage	Aliquot and store at -20°C (valid for 12 months). Avoid freeze/thaw cycles.
Shipping	Ice bags
Buffer	Liquid in PBS containing 50% glycerol, 0.5% protective protein and 0.02% New type preservative N.
Purification	Affinity purification

Application

Dilution Ratio	WB 1:500-1:2000,IHC 1:50-1:300,ELISA 1:2000-1:20000
Molecular Weight	45kDa

Antigen Information

Gene Name	GORAB
Alternative Names	GORAB; NTKLBP1; SCYL1BP1; RAB6-interacting golgin; N-terminal kinase-like-binding protein 1; NTKL-BP1; NTKL-binding protein 1; hNTKL-BP1; SCY1-like 1-binding protein 1; SCYL1-BP1; SCYL1-binding protein 1
Gene ID	92344.0
SwissProt ID	Q5T7V8
Immunogen	The antiserum was produced against synthesized peptide derived from the N-terminal region of human GORAB. AA range:1-50

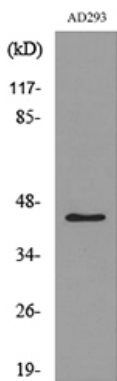
Background

golgin, RAB6 interacting(GORAB) Homo sapiens This gene encodes a member of the golgin family, a group of coiled-coil proteins localized to the Golgi. The encoded protein may function in the secretory pathway. The encoded protein, which also localizes to the cytoplasm, was identified by interactions with the N-terminal kinase-like protein, and thus it may function in mitosis. Mutations in this gene have been associated with geroderma osteodysplastica. Alternatively spliced transcript variants have been described. [provided by RefSeq, Mar 2009],caution:It is uncertain whether Met-1 or Met-26 is the initiator.,disease:Defects in GORAB are the cause of geroderma osteodysplasticum (GO) [MIM:231070]; also known as geroderma osteodysplastica or Walt Disney dwarfism. GO is a rare autosomal recessive disorder characterized by lax, wrinkled skin, joint laxity and a typical face with a prematurely aged appearance. Skeletal signs include severe osteoporosis leading to frequent fractures, malar and mandibular hypoplasia and a variable degree of growth retardation.,similarity:Belongs to the GORAB family.,subunit:Interacts with SCYL1 (By similarity). Interacts with RCHY1 and RAB6A/RAB6.,

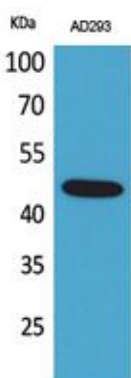
Research Area

Signal Transduction; Protein Trafficking; Vesicle Transport; Coat Proteins; Neuroscience; Neurology process; Neurodegenerative disease; Epigenetics and Nuclear Signaling; Transcription; Other factors; Chromatin Binding Proteins; DNA / RNA binding

Image Data



Western blot analysis of lysate from AD293 cells, using GORAB Antibody.



Western Blot analysis of AD293 cells using SCYL1BP1 Polyclonal Antibody.. Secondary antibody was diluted at 1:20000