
Product Name: SCP-2 Rabbit Polyclonal Antibody**Catalog #: APRab17666**

For research use only.

Summary

Description	Rabbit polyclonal Antibody
Host	Rabbit
Application	WB,IHC,ELISA
Reactivity	Human,Rat,Mouse
Conjugation	Unconjugated
Modification	Unmodified
Isotype	IgG
Clonality	Polyclonal
Form	Liquid
Concentration	1mg/ml
Storage	Aliquot and store at -20°C (valid for 12 months). Avoid freeze/thaw cycles.
Shipping	Ice bags
Buffer	Liquid in PBS containing 50% glycerol, 0.5% protective protein and 0.02% New type preservative N.
Purification	Affinity purification

Application

Dilution Ratio	WB 1:500-1:2000,IHC 1:50-1:300,ELISA 1:2000-1:20000
Molecular Weight	175kDa

Antigen Information

Gene Name	SYCP2
Alternative Names	SYCP2; SCP2; Synaptonemal complex protein 2; SCP-2; Synaptonemal complex lateral element protein; hsSCP2
Gene ID	10388.0
SwissProt ID	Q9BX26
Immunogen	Synthesized peptide derived from the Internal region of human SCP-2.

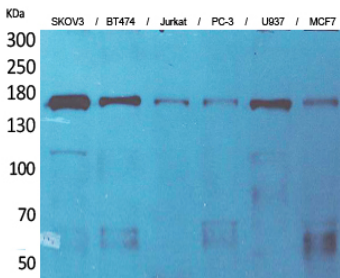
Background

The synaptonemal complex is a proteinaceous structure that links homologous chromosomes during the prophase of meiosis.

The protein encoded by this gene is a major component of the synaptonemal complex and may bind DNA at scaffold attachment regions. The encoded protein requires synaptonemal complex protein 3, but not 1, for inclusion in the synaptonemal complex. [provided by RefSeq, Jul 2008],function:Major component of the axial/lateral elements of synaptonemal complexes (SCS) during meiotic prophase. May be involved in the organization of chromatin by temporarily binding to DNA scaffold attachment regions. Requires SYCP3, but not SYCP1, in order to be incorporated into the axial/lateral elements.,similarity:Belongs to the SYCP2 family.,subcellular location:In axial/lateral elements of the tripartite segments of synaptonemal complexes.,subunit:Heterodimer with SYCP3. Interacts with SYCP3, SMC1A and SMC3.,

Research Area

Image Data



Western Blot analysis of SKOV3, BT474, Jurkat, PC-3, U937, MCF7 cells using SCP-2 Polyclonal Antibody.. Secondary antibody was diluted at 1:20000.