

Product Name: SCCA2 Rabbit Polyclonal Antibody**Catalog #: APRab17640**

For research use only.

Summary

Description	Rabbit polyclonal Antibody
Host	Rabbit
Application	WB,IHC,ELISA
Reactivity	Human,Rat,Mouse
Conjugation	Unconjugated
Modification	Unmodified
Isotype	IgG
Clonality	Polyclonal
Form	Liquid
Concentration	1mg/ml
Storage	Aliquot and store at -20°C (valid for 12 months). Avoid freeze/thaw cycles.
Shipping	Ice bags
Buffer	Liquid in PBS containing 50% glycerol, 0.5% protective protein and 0.02% New type preservative N.
Purification	Affinity purification

Application

Dilution Ratio	WB 1:500-1:2000,IHC 1:50-1:300,ELISA 1:2000-1:20000
Molecular Weight	45kDa

Antigen Information

Gene Name	SERPINB4
Alternative Names	SERPINB4; PI11; SCCA2; Serpin B4; Leupin; Peptidase inhibitor 11; PI-11; Squamous cell carcinoma antigen 2; SCCA-2
Gene ID	6318.0
SwissProt ID	P48594
Immunogen	The antiserum was produced against synthesized peptide derived from human SERPINB4. AA range:261-310

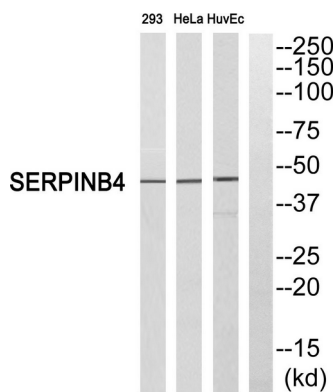
Background

function:May act as a protease inhibitor to modulate the host immune response against tumor cells.,similarity:Belongs to the serpin family.,similarity:Belongs to the serpin family. Ov-serpin subfamily.,subcellular location:Seems to also be secreted in plasma by cancerous cells but at a low level.,tissue specificity:Squamous cells.,function:May act as a protease inhibitor to modulate the host immune response against tumor cells.,similarity:Belongs to the serpin family.,similarity:Belongs to the serpin family. Ov-serpin subfamily.,subcellular location:Seems to also be secreted in plasma by cancerous cells but at a low level.,tissue specificity:Squamous cells.,

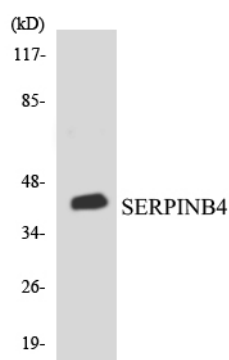
Research Area

Immunology; Immune System Diseases; Allergens; Cell Biology; Proteolysis / Ubiquitin; Protease inhibitors; Serine protease inhibitors; SERPINS; Cancer; Tumor biomarkers; Enzymes

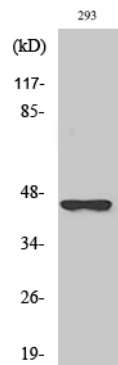
Image Data



Western blot analysis of SERPINB4 Antibody. The lane on the right is blocked with the SERPINB4 peptide.



Western blot analysis of the lysates from COLO205 cells using SERPINB4 antibody.



Western Blot analysis of various cells using SCCA2 Polyclonal Antibody