
Product Name: SCAMP1 Rabbit Polyclonal Antibody**Catalog #: APRab17634**

For research use only.

Summary

Description	Rabbit polyclonal Antibody
Host	Rabbit
Application	WB,IHC
Reactivity	Human,Mouse,Rat
Conjugation	Unconjugated
Modification	Unmodified
Isotype	IgG
Clonality	Polyclonal
Form	Liquid
Concentration	1mg/ml
Storage	Aliquot and store at -20°C (valid for 12 months). Avoid freeze/thaw cycles.
Shipping	Ice bags
Buffer	Liquid in PBS containing 50% glycerol, 0.5% protective protein and 0.02% New type preservative N.
Purification	Affinity purification

Application

Dilution Ratio	WB 1:500-1:2000,IHC 1:50-1:300
Molecular Weight	32kDa

Antigen Information

Gene Name	SCAMP1
Alternative Names	SCAMP1; SCAMP; Secretory carrier-associated membrane protein 1; Secretory carrier membrane protein 1
Gene ID	9522.0
SwissProt ID	O15126
Immunogen	The antiserum was produced against synthesized peptide derived from human SCAMP1. AA range:273-322

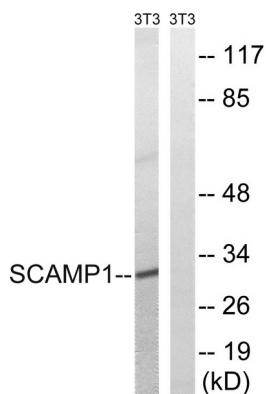
Background

This gene product belongs to the SCAMP family of proteins, which are secretory carrier membrane proteins. They function as carriers to the cell surface in post-golgi recycling pathways. Different family members are highly related products of distinct genes, and are usually expressed together. These findings suggest that these protein family members may function at the same site during vesicular transport rather than in separate pathways. A pseudogene of this gene has been defined on chromosome 1. Alternative splicing results in multiple transcript variants. [provided by RefSeq, Mar 2014],function:Functions in post-Golgi recycling pathways. Acts as a recycling carrier to the cell surface.,similarity:Belongs to the SCAMP family.,subunit:Interacts with AP1GBP1 and ITSN1 (By similarity). Interacts with SLC9A7.,tissue specificity:Widely expressed, with highest expression in brain.,

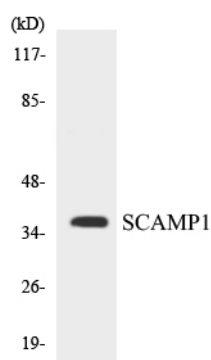
Research Area

Neuroscience; Neurotransmission; Secretory Vesicles; Signal Transduction; Protein Trafficking; Organelle Proteins

Image Data



Western blot analysis of lysates from NIH/3T3 cells, using SCAMP1 Antibody. The lane on the right is blocked with the synthesized peptide.



Western blot analysis of the lysates from HeLa cells using SCAMP1 antibody.