

---

**Product Name: SAR1A Rabbit Polyclonal Antibody****Catalog #: APRab17602**

For research use only.

**Summary**

<b>Description</b>	Rabbit polyclonal Antibody
<b>Host</b>	Rabbit
<b>Application</b>	WB,ELISA
<b>Reactivity</b>	Human,Mouse
<b>Conjugation</b>	Unconjugated
<b>Modification</b>	Unmodified
<b>Isotype</b>	IgG
<b>Clonality</b>	Polyclonal
<b>Form</b>	Liquid
<b>Concentration</b>	1mg/ml
<b>Storage</b>	Aliquot and store at -20°C (valid for 12 months). Avoid freeze/thaw cycles.
<b>Shipping</b>	Ice bags
<b>Buffer</b>	Liquid in PBS containing 50% glycerol, and 0.02% New type preservative N.
<b>Purification</b>	Affinity purification

**Application**

<b>Dilution Ratio</b>	WB 1:500-1:2000,ELISA 1:5000-1:20000
<b>Molecular Weight</b>	21kDa

**Antigen Information**

<b>Gene Name</b>	SAR1A SAR1 SARA SARA1
<b>Alternative Names</b>	
<b>Gene ID</b>	56681.0
<b>SwissProt ID</b>	Q9NR31
<b>Immunogen</b>	Synthesized peptide derived from part region of human protein

**Background**

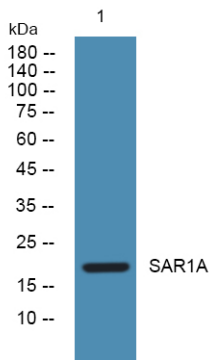
function:Involved in transport from the endoplasmic reticulum to the Golgi apparatus (By similarity). Required to maintain SEC16A localization at discrete locations on the ER membrane perhaps by preventing its dissociation. SAR1A-GTP-dependent assembly of SEC16A on the ER membrane forms an organized scaffold defining endoplasmic reticulum exit sites

(ERES),,similarity:Belongs to the small GTPase superfamily,,similarity:Belongs to the small GTPase superfamily. SAR1 family,,function:Involved in transport from the endoplasmic reticulum to the Golgi apparatus (By similarity). Required to maintain SEC16A localization at discrete locations on the ER membrane perhaps by preventing its dissociation. SAR1A-GTP-dependent assembly of SEC16A on the ER membrane forms an organized scaffold defining endoplasmic reticulum exit sites (ERES),,similarity:Belongs to the small GTPase superfamily,,similarity:Belongs to the small GTPase superfamily. SAR1 family,,

## Research Area

Signal Transduction; Signaling Pathway; G Protein Signaling; Small G Proteins; Protein Trafficking; Organelle Proteins

## Image Data



Western blot analysis of lysates from K562 cells, SAR1A Rabbit Polyclonal Antibody was diluted at 1:1000, 4° over night