

Product Name: SAPAP1 Rabbit Polyclonal Antibody**Catalog #: APRab17600**

For research use only.

Summary

Description	Rabbit polyclonal Antibody
Host	Rabbit
Application	WB,IHC,ICC/IF,ELISA
Reactivity	Human,Mouse,Rat
Conjugation	Unconjugated
Modification	Unmodified
Isotype	IgG
Clonality	Polyclonal
Form	Liquid
Concentration	1mg/ml
Storage	Aliquot and store at -20°C (valid for 12 months). Avoid freeze/thaw cycles.
Shipping	Ice bags
Buffer	Liquid in PBS containing 50% glycerol, 0.5% protective protein and 0.02% New type preservative N.
Purification	Affinity purification

Application

Dilution Ratio	WB 1:500-1:2000,IHC 1:100-1:300,ICC/IF 1:200-1:1000,ELISA 1:20000-1:40000
Molecular Weight	108kDa

Antigen Information

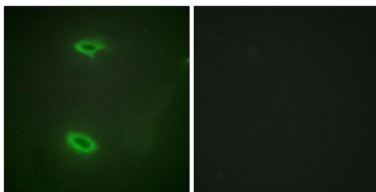
Gene Name	DLGAP1 DLGAP1; DAP1; GKAP; Disks large-associated protein 1; DAP-1; Guanylate kinase-associated
Alternative Names	protein; hGKAP; PSD-95/SAP90-binding protein 1; SAP90/PSD-95-associated protein 1; SAPAP1
Gene ID	9229.0
SwissProt ID	O14490
Immunogen	The antiserum was produced against synthesized peptide derived from human DLGP1. AA range:791-840

Background

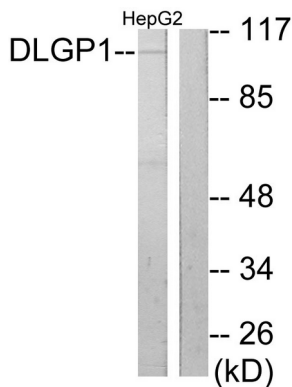
function:Part of the postsynaptic scaffold in neuronal cells.,similarity:Belongs to the SAPAP family.,subcellular location:Found in postsynaptic density of neuronal cells.,subunit:Interacts with guanylate kinase-like domain of DLG1, DLG2, DLG3, DLG4 and AIP1. Interacts with the PDZ domain of SHANK1, SHANK2 and SHANK3. Found in a complex with DLG4 and SHANK1, SHANK2 or SHANK3. Found in a complex with DLG4 and BEGAIN. Interacts with DYL2 and LRFN1.,tissue specificity:Expressed in brain.,function:Part of the postsynaptic scaffold in neuronal cells.,similarity:Belongs to the SAPAP family.,subcellular location:Found in postsynaptic density of neuronal cells.,subunit:Interacts with guanylate kinase-like domain of DLG1, DLG2, DLG3, DLG4 and AIP1. Interacts with the PDZ domain of SHANK1, SHANK2 and SHANK3. Found in a complex with DLG4 and SHANK1, SHANK2 or SHANK3. Found in a complex with DLG4 and BEGAIN. Interacts with DYL2 and LRFN1.,tissue specificity:Expressed in brain.,

Research Area

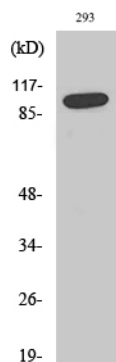
Image Data



Immunofluorescence analysis of HeLa cells, using DLGP1 Antibody. The picture on the right is blocked with the synthesized peptide.



Western blot analysis of lysates from HepG2 cells, using DLGP1 Antibody. The lane on the right is blocked with the synthesized peptide.



Western Blot analysis of various cells using SAPAP1 Polyclonal Antibody

