
Product Name: SAA4 Rabbit Polyclonal Antibody**Catalog #: APRab17568**

For research use only.

Summary

Description	Rabbit polyclonal Antibody
Host	Rabbit
Application	IHC, ICC/IF, ELISA
Reactivity	Human, Rat, Mouse
Conjugation	Unconjugated
Modification	Unmodified
Isotype	IgG
Clonality	Polyclonal
Form	Liquid
Concentration	1mg/ml
Storage	Aliquot and store at -20°C (valid for 12 months). Avoid freeze/thaw cycles.
Shipping	Ice bags
Buffer	Liquid in PBS containing 50% glycerol, 0.5% protective protein and 0.02% New type preservative N.
Purification	Affinity purification

Application

Dilution Ratio IHC 1:100-1:300, ICC/IF 1:50-1:200, ELISA 1:20000-1:40000

Molecular Weight

Antigen Information

Gene Name	SAA4
Alternative Names	SAA4; CSAA; Serum amyloid A-4 protein; Constitutively expressed serum amyloid A protein; C-SAA
Gene ID	6291.0
SwissProt ID	P35542
Immunogen	The antiserum was produced against synthesized peptide derived from human SAA4. AA range:81-130

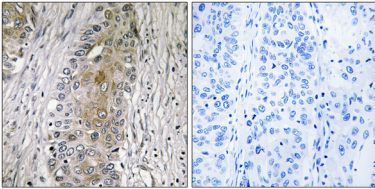
Background

function:Major acute phase reactant. Apolipoprotein of the HDL complex.,induction:Constitutively expressed.,similarity:Belongs to the SAA family.,tissue specificity:Expressed by the liver; secreted in plasma.,function:Major acute phase reactant. Apolipoprotein of the HDL complex.,induction:Constitutively expressed.,similarity:Belongs to the SAA family.,tissue specificity:Expressed by the liver; secreted in plasma.,

Research Area

Cardiovascular; Blood; Acute Phase Reactants; Lipids / Lipoproteins; Lipoproteins/Apolipoproteins; Atherosclerosis; Lipoprotein metabolism; Apolipoproteins; Metabolism; Pathways and Processes; Metabolic signaling pathways; Lipid and lipoprotein metabolism; Cancer; Heart disease

Image Data



Immunohistochemistry analysis of paraffin-embedded human lung carcinoma, using SAA4 Antibody. The picture on the right is blocked with the synthesized peptide.