

---

**Product Name: S1A7A Rabbit Polyclonal Antibody****Catalog #: APRab17492**

For research use only.

**Summary**

<b>Description</b>	Rabbit polyclonal Antibody
<b>Host</b>	Rabbit
<b>Application</b>	WB,ELISA
<b>Reactivity</b>	Human,Rat,Mouse
<b>Conjugation</b>	Unconjugated
<b>Modification</b>	Unmodified
<b>Isotype</b>	IgG
<b>Clonality</b>	Polyclonal
<b>Form</b>	Liquid
<b>Concentration</b>	1mg/ml
<b>Storage</b>	Aliquot and store at -20°C (valid for 12 months). Avoid freeze/thaw cycles.
<b>Shipping</b>	Ice bags
<b>Buffer</b>	Liquid in PBS containing 50% glycerol, and 0.02% New type preservative N.
<b>Purification</b>	Affinity purification

**Application**

<b>Dilution Ratio</b>	WB 1:500-1:2000,ELISA 1:5000-1:20000
<b>Molecular Weight</b>	11kDa

**Antigen Information**

<b>Gene Name</b>	S100A7A S100A15 S100A7L1
<b>Alternative Names</b>	
<b>Gene ID</b>	338324.0
<b>SwissProt ID</b>	Q86SG5
<b>Immunogen</b>	Synthesized peptide derived from human protein . at AA range: 30-110

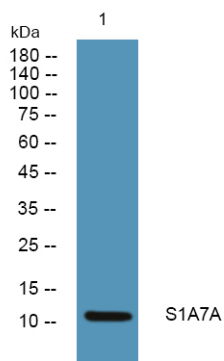
**Background**

function:May be involved in epidermal differentiation and inflammation and might therefore be important for the pathogenesis of psoriasis and other diseases.,similarity:Belongs to the S-100 family.,similarity:Contains 2 EF-hand domains.,tissue specificity:Overexpressed in psoriasis.,function:May be involved in epidermal differentiation and inflammation

and might therefore be important for the pathogenesis of psoriasis and other diseases.,similarity:Belongs to the S-100 family.,similarity:Contains 2 EF-hand domains.,tissue specificity:Overexpressed in psoriasis.,

## Research Area

## Image Data



Western blot analysis of lysates from DU145 cells, S1A7A Rabbit Polyclonal Antibody was diluted at 1:1000, 4°over night