

Product Name: S-100Z Rabbit Polyclonal Antibody
Catalog #: APRab17478



Summary

Production Name	S-100Z Rabbit Polyclonal Antibody
Description	Rabbit Polyclonal Antibody
Host	Rabbit
Application	WB,IHC-P,IF-P,IF-F,ICC/IF,ELISA
Reactivity	Human,Rat,Mouse

Performance

Conjugation	Unconjugated
Modification	Unmodified
Isotype	IgG
Clonality	Polyclonal
Form	Liquid
Storage	Store at 4°C short term. Aliquot and store at -20°C long term. Avoid freeze/thaw cycles.
Buffer	Liquid in PBS containing 50% glycerol, 0.5% protective protein and 0.02% New type preservative N.
Purification	Affinity purification

Immunogen

Gene Name	S100Z
Alternative Names	S100Z; Protein S100-Z; S100 calcium-binding protein Z
Gene ID	170591.0
SwissProt ID	Q8WXG8.The antiserum was produced against synthesized peptide derived from human S100Z. AA range:2-51

Application

Dilution Ratio	WB 1:500-1:2000, IHC-P 1:100-1:300, ELISA 1:20000, IF-P/IF-F/ICC/IF 1:50-200
Molecular Weight	12kDa

Product Name: S-100Z Rabbit Polyclonal Antibody
Catalog #: APRab17478

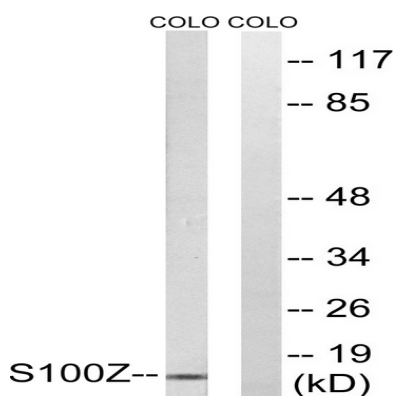


Background

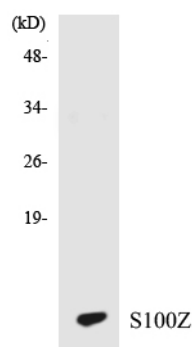
Members of the S100 protein family contain 2 calcium-binding EF-hands and exhibit cell-type specific expression patterns. For additional background information on S100 proteins, see MIM 114085.[supplied by OMIM, Mar 2008],miscellaneous:This protein binds two calcium ions.,similarity:Belongs to the S-100 family.,similarity:Contains 2 EF-hand domains.,subunit:Homodimer. Interacts with S100P.,tissue specificity:Highest level of expression in spleen and leukocytes.,

Research Area

Image Data

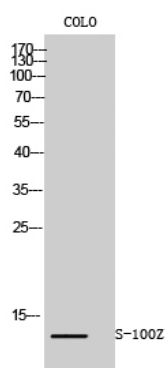


Western blot analysis of lysates from COLO cells, using S100Z Antibody. The lane on the right is blocked with the synthesized peptide.



Western blot analysis of the lysates from HT-29 cells using S100Z antibody.

Product Name: S-100Z Rabbit Polyclonal Antibody
Catalog #: APRab17478



Western Blot analysis of COLO cells using S-100Z Polyclonal Antibody

Note

For research use only.