
Product Name: S-100P Rabbit Polyclonal Antibody**Catalog #: APRab17477**

For research use only.

Summary

Description	Rabbit polyclonal Antibody
Host	Rabbit
Application	WB,IHC,ICC/IF,ELISA
Reactivity	Human,Rat,Mouse
Conjugation	Unconjugated
Modification	Unmodified
Isotype	IgG
Clonality	Polyclonal
Form	Liquid
Concentration	1mg/ml
Storage	Aliquot and store at -20°C (valid for 12 months). Avoid freeze/thaw cycles.
Shipping	Ice bags
Buffer	Liquid in PBS containing 50% glycerol, 0.5% protective protein and 0.02% New type preservative N.
Purification	Affinity purification

Application

Dilution Ratio	WB 1:500-1:2000,IHC 1:100-1:300,ICC/IF 1:50-1:200,ELISA 1:10000-1:20000
Molecular Weight	10kDa

Antigen Information

Gene Name	S100P
Alternative Names	S100P; S100E; Protein S100-P; Protein S100-E; S100 calcium-binding protein P
Gene ID	6286.0
SwissProt ID	P25815
Immunogen	The antiserum was produced against synthesized peptide derived from human S100P. AA range:26-75

Background

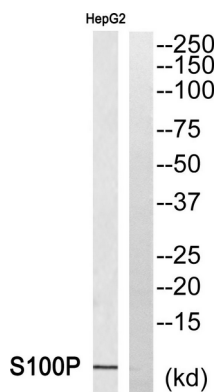
The protein encoded by this gene is a member of the S100 family of proteins containing 2 EF-hand calcium-binding motifs.

S100 proteins are localized in the cytoplasm and/or nucleus of a wide range of cells, and involved in the regulation of a number of cellular processes such as cell cycle progression and differentiation. S100 genes include at least 13 members which are located as a cluster on chromosome 1q21; however, this gene is located at 4p16. This protein, in addition to binding Ca^{2+} , also binds Zn^{2+} and Mg^{2+} . This protein may play a role in the etiology of prostate cancer. [provided by RefSeq, Jul 2008],miscellaneous:This protein binds two calcium ions.,similarity:Belongs to the S-100 family.,similarity:Contains 2 EF-hand domains.,subcellular location:Colocalizes with S100BPB in the nucleus.,subunit:Homodimer. Interacts with S100BPB and S100Z.,tissue specificity:Up-regulated in various pancreatic ductal adenocarcinomas and pancreatic intraepithelial neoplasias.,

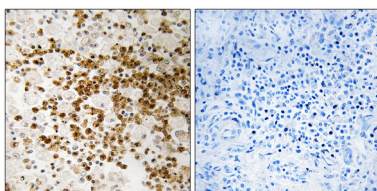
Research Area

Signal Transduction; Signaling Pathway; Calcium Signaling; Calcium Binding Proteins; Cancer; Tumor biomarkers

Image Data



Western blot analysis of S100P Antibody. The lane on the right is blocked with the S100P peptide.



Immunohistochemistry analysis of paraffin-embedded human lung carcinoma, using S100P Antibody. The lane on the right is blocked with the S100P peptide.