

Product Name: S-100A7L2 Rabbit Polyclonal Antibody**Catalog #: APRab17473**

For research use only.

Summary

Description	Rabbit polyclonal Antibody
Host	Rabbit
Application	WB,ELISA
Reactivity	Human,Rat,Mouse
Conjugation	Unconjugated
Modification	Unmodified
Isotype	IgG
Clonality	Polyclonal
Form	Liquid
Concentration	1mg/ml
Storage	Aliquot and store at -20°C (valid for 12 months). Avoid freeze/thaw cycles.
Shipping	Ice bags
Buffer	Liquid in PBS containing 50% glycerol, 0.5% protective protein and 0.02% New type preservative N.
Purification	Affinity purification

Application

Dilution Ratio	WB 1:500-1:2000,ELISA 1:5000-1:20000
Molecular Weight	11kDa

Antigen Information

Gene Name	S100A7L2
Alternative Names	S100A7L2; S100A7B; Protein S100-A7-like 2; S100 calcium-binding protein A7-like 2
Gene ID	645922.0
SwissProt ID	Q5SY68
Immunogen	The antiserum was produced against synthesized peptide derived from human S100A7L2. AA range:38-87

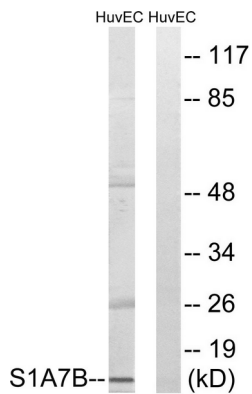
Background

similarity:Belongs to the S-100 family.,similarity:Contains 2 EF-hand domains.,similarity:Belongs to the S-100

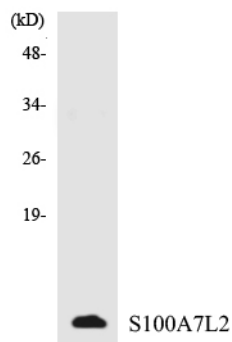
family.,similarity:Contains 2 EF-hand domains.,

Research Area

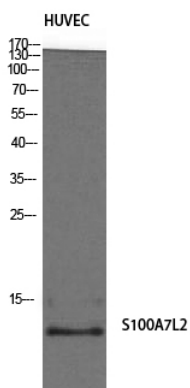
Image Data



Western blot analysis of lysates from HUVEC cells, using S100A7L2 Antibody. The lane on the right is blocked with the synthesized peptide.



Western blot analysis of the lysates from HepG2 cells using S100A7L2 antibody.



Western Blot analysis of HuvEc cells using S-100A7L2 Polyclonal Antibody