
Product Name: S100A7A Rabbit Polyclonal Antibody**Catalog #: APRab17472**

For research use only.

Summary

Description	Rabbit polyclonal Antibody
Host	Rabbit
Application	IHC,ELISA
Reactivity	Human,Rat,Mouse
Conjugation	Unconjugated
Modification	Unmodified
Isotype	IgG
Clonality	Polyclonal
Form	Liquid
Concentration	1mg/ml
Storage	Aliquot and store at -20°C (valid for 12 months). Avoid freeze/thaw cycles.
Shipping	Ice bags
Buffer	Liquid in PBS containing 50% glycerol, 0.5% protective protein and 0.02% New type preservative N.
Purification	Affinity purification

Application

Dilution Ratio IHC 1:50-1:200,ELISA 1:5000-1:20000

Molecular Weight

Antigen Information

Gene Name	S100A7A
Alternative Names	Protein S100-A7A (S100 calcium-binding protein A15;S100 calcium-binding protein A7-like 1;S100 calcium-binding protein A7A)
Gene ID	338324.0
SwissProt ID	Q86SG5
Immunogen	Synthesized peptide derived from human S100A7A AA range: 32-82

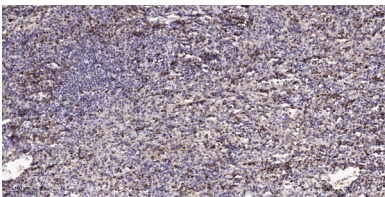
Background

function:May be involved in epidermal differentiation and inflammation and might therefore be important for the

pathogenesis of psoriasis and other diseases.,similarity:Belongs to the S-100 family.,similarity:Contains 2 EF-hand domains.,tissue specificity:Overexpressed in psoriasis.,function:May be involved in epidermal differentiation and inflammation and might therefore be important for the pathogenesis of psoriasis and other diseases.,similarity:Belongs to the S-100 family.,similarity:Contains 2 EF-hand domains.,tissue specificity:Overexpressed in psoriasis.,

Research Area

Image Data



Immunohistochemical analysis of paraffin-embedded human spleen tissue. 1,S100A7A Rabbit Polyclonal Antibody was diluted at 1:200 (4° overnight) . 2, Sodium citrate pH 6.0 was used for antigen retrieval (>98°C,20min) . 3,Secondary antibody was diluted at 1:200.