

**Product Name: S100A7 Rabbit Polyclonal Antibody****Catalog #: APRab17471**

For research use only.

**Summary**

<b>Description</b>	Rabbit polyclonal Antibody
<b>Host</b>	Rabbit
<b>Application</b>	WB,IHC,ICC/IF,ELISA
<b>Reactivity</b>	Human,Rat,Mouse
<b>Conjugation</b>	Unconjugated
<b>Modification</b>	Unmodified
<b>Isotype</b>	IgG
<b>Clonality</b>	Polyclonal
<b>Form</b>	Liquid
<b>Concentration</b>	1mg/ml
<b>Storage</b>	Aliquot and store at -20°C (valid for 12 months). Avoid freeze/thaw cycles.
<b>Shipping</b>	Ice bags
<b>Buffer</b>	Liquid in PBS containing 50% glycerol, 0.5% protective protein and 0.02% New type preservative N.
<b>Purification</b>	Affinity purification

**Application**

<b>Dilution Ratio</b>	WB 1:500-1:2000,IHC 1:100-1:300,ICC/IF 1:200-1:1000,ELISA 1:5000-1:10000
<b>Molecular Weight</b>	

**Antigen Information**

<b>Gene Name</b>	S100A7 PSOR1 S100A7C
<b>Alternative Names</b>	Protein S100-A7 (Psoriasin;S100 calcium-binding protein A7)
<b>Gene ID</b>	6278.0
<b>SwissProt ID</b>	P31151
<b>Immunogen</b>	Synthesized peptide derived from human S100A7 AA range: 1-51

**Background**

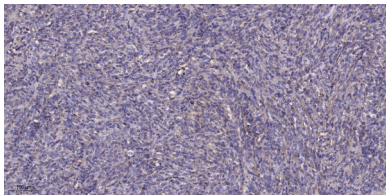
S100 calcium binding protein A7(S100A7) Homo sapiens The protein encoded by this gene is a member of the S100 family of proteins containing 2 EF-hand calcium-binding motifs. S100 proteins are localized in the cytoplasm and/or nucleus of a wide

range of cells, and involved in the regulation of a number of cellular processes such as cell cycle progression and differentiation. S100 genes include at least 13 members which are located as a cluster on chromosome 1q21. This protein differs from the other S100 proteins of known structure in its lack of calcium binding ability in one EF-hand at the N-terminus. The protein is overexpressed in hyperproliferative skin diseases, exhibits antimicrobial activities against bacteria and induces immunomodulatory activities. [provided by RefSeq, Nov 2014],mass spectrometry: PubMed:8526920,similarity:Belongs to the S-101 family.,similarity:Contains 2 EF-hand domains.,subcellular location:Secreted by a non-classical secretory pathway.,subunit:Interacts with RANBP9.,tissue specificity:Fetal ear, skin, and tongue and human cell lines. Highly up-regulated in psoriatic epidermis. Also highly expressed in the urine of bladder squamous cell carcinoma (SCC) bearing patients.,

## Research Area

Tags & Cell Markers; Cell Type Markers; Tumor Associated; Signal Transduction; Signaling Pathway; Calcium Signaling; Calcium Binding Proteins; Cancer; Signal transduction; Tumor biomarkers

## Image Data



Immunohistochemical analysis of paraffin-embedded human Colon cancer. 1, Antibody was diluted at 1:200 (4° overnight) . 2, Tris-EDTA,pH9.0 was used for antigen retrieval. 3,Secondary antibody was diluted at 1:200 (room temperature, 45min) .