

**Product Name: S-100A16 Rabbit Polyclonal Antibody****Catalog #: APRab17467**

For research use only.

**Summary**

<b>Description</b>	Rabbit polyclonal Antibody
<b>Host</b>	Rabbit
<b>Application</b>	WB,IHC,ICC/IF,ELISA
<b>Reactivity</b>	Human,Rat
<b>Conjugation</b>	Unconjugated
<b>Modification</b>	Unmodified
<b>Isotype</b>	IgG
<b>Clonality</b>	Polyclonal
<b>Form</b>	Liquid
<b>Concentration</b>	1mg/ml
<b>Storage</b>	Aliquot and store at -20°C (valid for 12 months). Avoid freeze/thaw cycles.
<b>Shipping</b>	Ice bags
<b>Buffer</b>	Liquid in PBS containing 50% glycerol, 0.5% protective protein and 0.02% New type preservative N.
<b>Purification</b>	Affinity purification

**Application**

<b>Dilution Ratio</b>	WB 1:500-1:2000,IHC 1:100-1:300,ICC/IF 1:50-1:200,ELISA 1:20000-1:40000
<b>Molecular Weight</b>	20kDa

**Antigen Information**

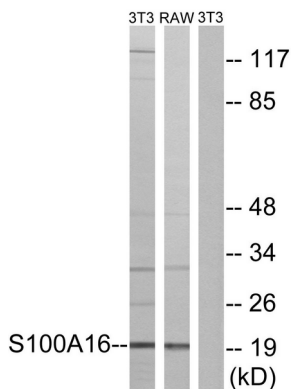
<b>Gene Name</b>	S100A16
<b>Alternative Names</b>	S100A16; S100F; AAG13; Protein S100-A16; Aging-associated gene 13 protein; Protein S100-F; S100 calcium-binding protein A16
<b>Gene ID</b>	140576.0
<b>SwissProt ID</b>	Q96FQ6
<b>Immunogen</b>	The antiserum was produced against synthesized peptide derived from human S100A16. AA range:19-68

**Background**

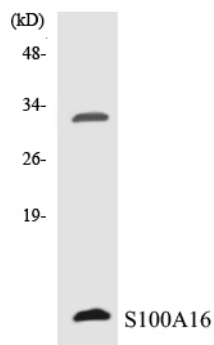
similarity:Belongs to the S-100 family.,similarity:Contains 2 EF-hand domains.,similarity:Belongs to the S-100 family.,similarity:Contains 2 EF-hand domains.,

## Research Area

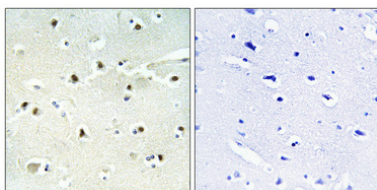
## Image Data



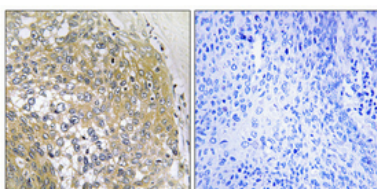
Western blot analysis of lysates from NIH/3T3 and RAW264.7 cells, using S100A16 Antibody. The lane on the right is blocked with the synthesized peptide.



Western blot analysis of the lysates from RAW264.7 cells using S100A16 antibody.



Immunohistochemical analysis of paraffin-embedded Human brain. Antibody was diluted at 1:100 (4°, overnight). High-pressure and temperature Tris-EDTA, pH 8.0 was used for antigen retrieval. Negative control (right) obtained from antibody was pre-absorbed by immunogen peptide.



Immunohistochemical analysis of paraffin-embedded Human cervix cancer. Antibody was diluted at 1:100 (4°, overnight). High-pressure and temperature Tris-EDTA, pH 8.0 was used for antigen retrieval. Negative control (right) obtained from antibody was pre-absorbed by immunogen peptide.