

**Product Name: RUFY1 Rabbit Polyclonal Antibody****Catalog #: APRab17438**

For research use only.

**Summary**

<b>Description</b>	Rabbit polyclonal Antibody
<b>Host</b>	Rabbit
<b>Application</b>	WB,ELISA
<b>Reactivity</b>	Human,Mouse
<b>Conjugation</b>	Unconjugated
<b>Modification</b>	Unmodified
<b>Isotype</b>	IgG
<b>Clonality</b>	Polyclonal
<b>Form</b>	Liquid
<b>Concentration</b>	1mg/ml
<b>Storage</b>	Aliquot and store at -20°C (valid for 12 months). Avoid freeze/thaw cycles.
<b>Shipping</b>	Ice bags
<b>Buffer</b>	Liquid in PBS containing 50% glycerol, 0.5% protective protein and 0.02% New type preservative N.
<b>Purification</b>	Affinity purification

**Application**

<b>Dilution Ratio</b>	WB 1:500-1:2000,ELISA 1:5000-1:20000
<b>Molecular Weight</b>	80kDa

**Antigen Information**

<b>Gene Name</b>	RUFY1 RUFY1; RABIP4; ZFYVE12; RUN and FYVE domain-containing protein 1; FYVE-finger protein
<b>Alternative Names</b>	EIP1; La-binding protein 1; Rab4-interacting protein; Zinc finger FYVE domain-containing protein 12
<b>Gene ID</b>	80230.0
<b>SwissProt ID</b>	Q96T51
<b>Immunogen</b>	The antiserum was produced against synthesized peptide derived from human RUFY1. AA range:139-188

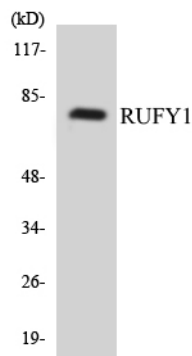
## Background

RUN and FYVE domain containing 1 (RUFY1) Homo sapiens This gene encodes a protein that contains a RUN domain and a FYVE-type zinc finger domain. The encoded protein binds to phosphatidylinositol-3-phosphate (PI3P) and plays a role in early endosomal trafficking, tethering and fusion through interactions with small GTPases including Rab4, Rab5 and Rab14. Alternatively spliced transcript variants encoding multiple isoforms have been observed for this gene. [provided by RefSeq, Dec 2011],domain:The FYVE-type zinc finger domain mediates interactions with phosphatidylinositol 3-phosphate.,function:Binds phospholipid vesicles containing phosphatidylinositol 3-phosphate and participates in early endosomal trafficking.,PTM:Phosphorylated upon DNA damage, probably by ATM or ATR.,PTM:Phosphorylation on Tyr-389 and/or Tyr-400 is required for interaction with BMX and endosomal targeting.,similarity:Contains 1 FYVE-type zinc finger.,similarity:Contains 1 RUN domain.,subunit:Interacts with BMX. May interact with SSB. Interacts with RAB4 and RAB5 that have been activated by GTP-binding.,tissue specificity:Broadly expressed, with highest levels in lung, testis, kidney and brain.,

## Research Area

Endocytosis;

## Image Data



Western blot analysis of the lysates from HUVEC cells using RUFY1 antibody.