
Product Name: Rsu-1 Rabbit Polyclonal Antibody**Catalog #: APRab17419**

For research use only.

Summary

Description	Rabbit polyclonal Antibody
Host	Rabbit
Application	WB,ELISA
Reactivity	Human,Mouse
Conjugation	Unconjugated
Modification	Unmodified
Isotype	IgG
Clonality	Polyclonal
Form	Liquid
Concentration	1mg/ml
Storage	Aliquot and store at -20°C (valid for 12 months). Avoid freeze/thaw cycles.
Shipping	Ice bags
Buffer	Liquid in PBS containing 50% glycerol, 0.5% protective protein and 0.02% New type preservative N.
Purification	Affinity purification

Application

Dilution Ratio	WB 1:500-1:2000,ELISA 1:10000-1:20000
Molecular Weight	36kDa

Antigen Information

Gene Name	RSU1
Alternative Names	RSU1; RSP1; Ras suppressor protein 1; RSP-1; Rsu-1
Gene ID	6251.0
SwissProt ID	Q15404
Immunogen	The antiserum was produced against synthesized peptide derived from human RSU1. AA range:187-236

Background

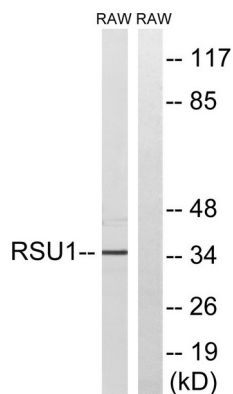
This gene encodes a protein that is involved in the Ras signal transduction pathway, growth inhibition, and nerve-growth factor

induced differentiation processes, as determined in mouse and human cell line studies. In mouse, the encoded protein was initially isolated based on its ability to inhibit v-Ras transformation. Multiple alternatively spliced transcript variants for this gene have been reported; one of these variants was found only in glioma tumors. [provided by RefSeq, Jul 2008],function:Potentially plays a role in the Ras signal transduction pathway. Capable of suppressing v-Ras transformation in vitro.,similarity:Contains 7 LRR (leucine-rich) repeats.,

Research Area

Signal Transduction; Signaling Pathway; G Protein Signaling; Small G Proteins; Ras Family

Image Data



Western blot analysis of lysates from RAW264.7 cells, using RSU1 Antibody. The lane on the right is blocked with the synthesized peptide.