

**Product Name: RSAD1 Rabbit Polyclonal Antibody****Catalog #: APRab17400**

For research use only.

**Summary**

<b>Description</b>	Rabbit polyclonal Antibody
<b>Host</b>	Rabbit
<b>Application</b>	WB,IHC,ICC/IF,ELISA
<b>Reactivity</b>	Human,Mouse
<b>Conjugation</b>	Unconjugated
<b>Modification</b>	Unmodified
<b>Isotype</b>	IgG
<b>Clonality</b>	Polyclonal
<b>Form</b>	Liquid
<b>Concentration</b>	1mg/ml
<b>Storage</b>	Aliquot and store at -20°C (valid for 12 months). Avoid freeze/thaw cycles.
<b>Shipping</b>	Ice bags
<b>Buffer</b>	Liquid in PBS containing 50% glycerol, 0.5% protective protein and 0.02% New type preservative N.
<b>Purification</b>	Affinity purification

**Application**

<b>Dilution Ratio</b>	WB 1:500-1:2000,IHC 1:100-1:300,ICC/IF 1:50-1:200,ELISA 1:5000-1:10000
<b>Molecular Weight</b>	52kDa

**Antigen Information**

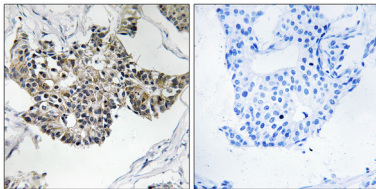
<b>Gene Name</b>	RSAD1
<b>Alternative Names</b>	RSAD1; Radical S-adenosyl methionine domain-containing protein 1; mitochondrial; Oxygen-independent coproporphyrinogen-III oxidase-like protein RSAD1
<b>Gene ID</b>	55316.0
<b>SwissProt ID</b>	Q9HA92
<b>Immunogen</b>	The antiserum was produced against synthesized peptide derived from human RSAD1. AA range:298-347

**Background**

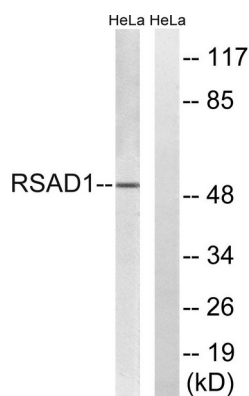
cofactor: Binds 1 4Fe-4S cluster. The cluster is coordinated with 3 cysteines and an exchangeable S-adenosyl-L-methionine. ,function: May be involved in porphyrin cofactor biosynthesis. ,similarity: Belongs to the anaerobic coproporphyrinogen-III oxidase family. ,cofactor: Binds 1 4Fe-4S cluster. The cluster is coordinated with 3 cysteines and an exchangeable S-adenosyl-L-methionine. ,function: May be involved in porphyrin cofactor biosynthesis. ,similarity: Belongs to the anaerobic coproporphyrinogen-III oxidase family. ,

## Research Area

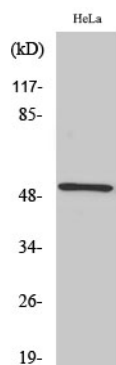
## Image Data



Immunohistochemistry analysis of paraffin-embedded human breast carcinoma tissue, using RSAD1 Antibody. The picture on the right is blocked with the synthesized peptide.



Western blot analysis of lysates from HeLa cells, using RSAD1 Antibody. The lane on the right is blocked with the synthesized peptide.



Western Blot analysis of various cells using RSAD1 Polyclonal Antibody