

**Product Name: RRP7A Rabbit Polyclonal Antibody**  
**Catalog #: APRab17390**



## Summary

|                        |                                  |
|------------------------|----------------------------------|
| <b>Production Name</b> | RRP7A Rabbit Polyclonal Antibody |
| <b>Description</b>     | Rabbit Polyclonal Antibody       |
| <b>Host</b>            | Rabbit                           |
| <b>Application</b>     | WB,IHC-P,IF-P,IF-F,ICC/IF,ELISA  |
| <b>Reactivity</b>      | Human,Mouse,Rat                  |

## Performance

|                     |   |
|---------------------|---|
| <b>Conjugation</b>  | Unconjugated  |
| <b>Modification</b> | Unmodified  |
| <b>Isotype</b>      | IgG   |
| <b>Clonality</b>    | Polyclonal  |
| <b>Form</b>         | Liquid  |
| <b>Storage</b>      | Store at 4°C short term. Aliquot and store at -20°C long term. Avoid freeze/thaw cycles.          |
| <b>Buffer</b>       | Liquid in PBS containing 50% glycerol, 0.5% protective protein and 0.02% New type preservative N. |
| <b>Purification</b> | Affinity purification   |

## Immunogen

|                          |  |
|--------------------------|--|
| <b>Gene Name</b>         | RRP7A<br>RRP7A; CGI-96; Ribosomal RNA-processing protein 7 homolog A; Gastric cancer antigen Zg14; RRP7B; Putative ribosomal RNA-processing protein 7 homolog B; Putative gastric cancer antigen Zg14-like protein |
| <b>Alternative Names</b> |  |
| <b>Gene ID</b>           | 27341.0  |
| <b>SwissProt ID</b>      | Q9Y3A4.Synthesized peptide derived from the C-terminal region of human RRP7A.  |

## Application

|                         |  |
|-------------------------|--|
| <b>Dilution Ratio</b>   | WB 1:500-1:2000, IHC-P 1:100-300, ELISA 1:20000, IF-P/IF-F/ICC/IF 1:50-200 |
| <b>Molecular Weight</b> | 32kDa  |

**Product Name: RRP7A Rabbit Polyclonal Antibody**  
**Catalog #: AP Rab17390**

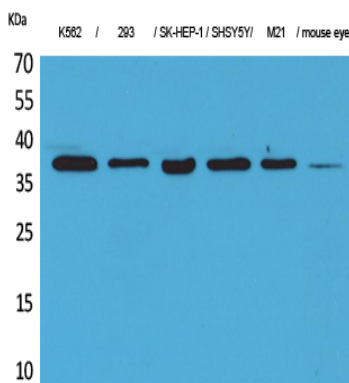


## Background

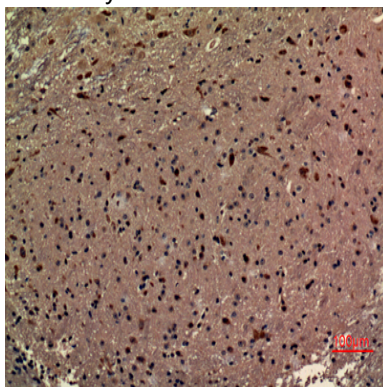
caution: Could be the product of a pseudogene., similarity: Belongs to the RRP7 family., similarity: Contains 1 RRM (RNA recognition motif) domain., caution: Could be the product of a pseudogene., similarity: Belongs to the RRP7 family., similarity: Contains 1 RRM (RNA recognition motif) domain.,

## Research Area

## Image Data



Western Blot analysis of K562, 293, SK-HEP-1, SHSY5Y, M21, mouse eye cells using RRP7A Polyclonal Antibody.. Secondary antibody was diluted at 1:20000



Immunohistochemical analysis of paraffin-embedded mouse-brain, antibody was diluted at 1:100

## Note

For research use only.