
Product Name: RPS6KL1 Rabbit Polyclonal Antibody**Catalog #: APRab17374**

For research use only.

Summary

Description	Rabbit polyclonal Antibody
Host	Rabbit
Application	IHC,ICC/IF,ELISA
Reactivity	Human,Rat,Mouse
Conjugation	Unconjugated
Modification	Unmodified
Isotype	IgG
Clonality	Polyclonal
Form	Liquid
Concentration	1mg/ml
Storage	Aliquot and store at -20°C (valid for 12 months). Avoid freeze/thaw cycles.
Shipping	Ice bags
Buffer	Liquid in PBS containing 50% glycerol, 0.5% protective protein and 0.02% New type preservative N.
Purification	Affinity purification

Application

Dilution Ratio IHC 1:100-1:300,ICC/IF 1:50-1:200,ELISA 1:20000-1:40000

Molecular Weight

Antigen Information

Gene Name	RPS6KL1
Alternative Names	RPS6KL1; Ribosomal protein S6 kinase-like 1
Gene ID	83694.0
SwissProt ID	Q9Y6S9
Immunogen	The antiserum was produced against synthesized peptide derived from human RPS6KL1. AA range:254-303

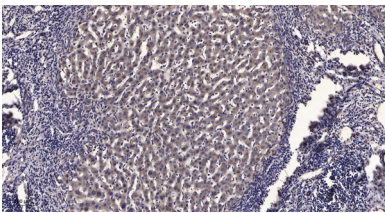
Background

catalytic activity:ATP + a protein = ADP + a phosphoprotein.,similarity:Belongs to the protein kinase superfamily. Ser/Thr

protein kinase family. S6 kinase subfamily.,similarity:Contains 1 MIT domain.,similarity:Contains 1 protein kinase domain.,catalytic activity:ATP + a protein = ADP + a phosphoprotein.,similarity:Belongs to the protein kinase superfamily. Ser/Thr protein kinase family. S6 kinase subfamily.,similarity:Contains 1 MIT domain.,similarity:Contains 1 protein kinase domain.,

Research Area

Image Data



Immunohistochemical analysis of paraffin-embedded human liver cancer. 1, Antibody was diluted at 1:200 (4° overnight) . 2, Tris-EDTA,pH9.0 was used for antigen retrieval. 3,Secondary antibody was diluted at 1:200 (room temperature, 45min) .