

Product Name: RPAP2 Rabbit Polyclonal Antibody**Catalog #: APRab17346**

For research use only.

Summary

Description	Rabbit polyclonal Antibody
Host	Rabbit
Application	WB,ELISA
Reactivity	Human,Rat,Mouse
Conjugation	Unconjugated
Modification	Unmodified
Isotype	IgG
Clonality	Polyclonal
Form	Liquid
Concentration	1mg/ml
Storage	Aliquot and store at -20°C (valid for 12 months). Avoid freeze/thaw cycles.
Shipping	Ice bags
Buffer	Liquid in PBS containing 50% glycerol, 0.5% protective protein and 0.02% New type preservative N.
Purification	Affinity purification

Application

Dilution Ratio	WB 1:500-1:2000,ELISA 1:5000-1:20000
Molecular Weight	70kDa

Antigen Information

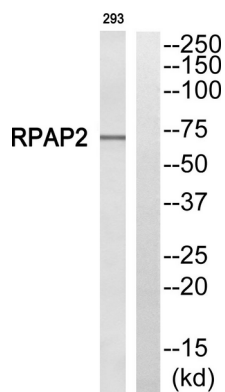
Gene Name	RPAP2
Alternative Names	RPAP2; C1orf82; Putative RNA polymerase II subunit B1 CTD phosphatase RPAP2; RNA polymerase II-associated protein 2
Gene ID	79871.0
SwissProt ID	Q8IXW5
Immunogen	The antiserum was produced against synthesized peptide derived from human RPAP2. AA range:460-509

Background

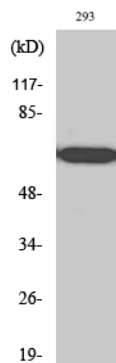
function:Forms an interface between the RNA polymerase II enzyme and chaperone/scaffolding protein, suggesting that it is required to connect RNA polymerase II to regulators of protein complex formation.,similarity:Belongs to the RPAP2 family.,subunit:Tightly associated with the RNA polymerase II complex.,function:Forms an interface between the RNA polymerase II enzyme and chaperone/scaffolding protein, suggesting that it is required to connect RNA polymerase II to regulators of protein complex formation.,similarity:Belongs to the RPAP2 family.,subunit:Tightly associated with the RNA polymerase II complex.,

Research Area

Image Data



Western blot analysis of RPAP2 Antibody. The lane on the right is blocked with the RPAP2 peptide.



Western Blot analysis of various cells using RPAP2 Polyclonal Antibody