

**Product Name: RPA135 Rabbit Polyclonal Antibody****Catalog #: APRab17335**

For research use only.

**Summary**

<b>Description</b>	Rabbit polyclonal Antibody
<b>Host</b>	Rabbit
<b>Application</b>	WB,IHC,ICC/IF,ELISA
<b>Reactivity</b>	Human,Mouse,Rat
<b>Conjugation</b>	Unconjugated
<b>Modification</b>	Unmodified
<b>Isotype</b>	IgG
<b>Clonality</b>	Polyclonal
<b>Form</b>	Liquid
<b>Concentration</b>	1mg/ml
<b>Storage</b>	Aliquot and store at -20°C (valid for 12 months). Avoid freeze/thaw cycles.
<b>Shipping</b>	Ice bags
<b>Buffer</b>	Liquid in PBS containing 50% glycerol, 0.5% protective protein and 0.02% New type preservative N.
<b>Purification</b>	Affinity purification

**Application**

<b>Dilution Ratio</b>	WB 1:500-1:2000,IHC 1:100-1:300,ICC/IF 1:50-1:200,ELISA 1:20000-1:40000
<b>Molecular Weight</b>	125kDa

**Antigen Information**

<b>Gene Name</b>	POLR1B
<b>Alternative Names</b>	POLR1B; DNA-directed RNA polymerase I subunit RPA2; RNA polymerase I subunit 2; DNA-directed RNA polymerase I 135 kDa polypeptide; RPA135
<b>Gene ID</b>	84172.0
<b>SwissProt ID</b>	Q9H9Y6
<b>Immunogen</b>	Synthesized peptide derived from the Internal region of human RPA135.

**Background**

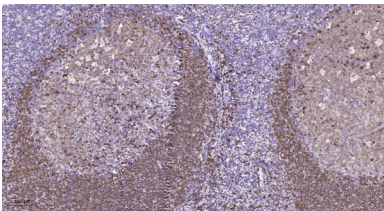
Eukaryotic RNA polymerase I (pol I) is responsible for the transcription of ribosomal RNA (rRNA) genes and production of rRNA,

the primary component of ribosomes. Pol I is a multisubunit enzyme composed of 6 to 14 polypeptides, depending on the species. Most of the mass of the pol I complex derives from the 2 largest subunits, Rpa1 and Rpa2 in yeast. POLR1B is homologous to Rpa2 (Seither and Grummt, 1996 [PubMed 8921381]).[supplied by OMIM, Mar 2008],catalytic activity:Nucleoside triphosphate + RNA(n) = diphosphate + RNA(n+1),,function:DNA-dependent RNA polymerase catalyzes the transcription of DNA into RNA using the four ribonucleoside triphosphates as substrates. Second largest core component of RNA polymerase I which synthesizes ribosomal RNA precursors. Proposed to contribute to the polymerase catalytic activity and forms the polymerase active center together with the largest subunit. Pol I is composed of mobile elements and RPA2 is part of the core element with the central large cleft and probably a clamp element that moves to open and close the cleft.,similarity:Belongs to the RNA polymerase beta chain family.,subunit:Component of the RNA polymerase I (Pol I) complex consisting of at least 13 subunits.,

## Research Area

Purine metabolism;Pyrimidine metabolism;RNA polymerase;

## Image Data



Immunohistochemical analysis of paraffin-embedded human tonsil. 1, Tris-EDTA,pH9.0 was used for antigen retrieval. 2 Antibody was diluted at 1:200 (4° overnight).3,Secondary antibody was diluted at 1:200 (room temperature, 45min) .