

Product Name: RORγ Rabbit Polyclonal Antibody**Catalog #: APRab17328**

For research use only.

Summary

Description	Rabbit polyclonal Antibody
Host	Rabbit
Application	WB,IHC
Reactivity	Human,Mouse
Conjugation	Unconjugated
Modification	Unmodified
Isotype	IgG
Clonality	Polyclonal
Form	Liquid
Concentration	1mg/ml
Storage	Aliquot and store at -20°C (valid for 12 months). Avoid freeze/thaw cycles.
Shipping	Ice bags
Buffer	Liquid in PBS containing 50% glycerol, 0.5% protective protein and 0.02% New type preservative N.
Purification	Affinity purification

Application

Dilution Ratio	WB 1:500-1:2000,IHC 1:50-1:300
Molecular Weight	58kDa

Antigen Information

Gene Name	RORC
Alternative Names	RORC; NR1F3; RORG; RZRG; Nuclear receptor ROR-gamma; Nuclear receptor RZR-gamma; Nuclear receptor subfamily 1 group F member 3; Retinoid-related orphan receptor-gamma
Gene ID	6097.0
SwissProt ID	P51449
Immunogen	The antiserum was produced against synthesized peptide derived from human RORG. AA range:71-120

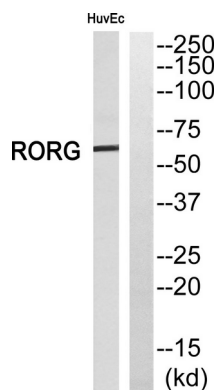
Background

The protein encoded by this gene is a DNA-binding transcription factor and is a member of the NR1 subfamily of nuclear hormone receptors. The specific functions of this protein are not known; however, studies of a similar gene in mice have shown that this gene may be essential for lymphoid organogenesis and may play an important regulatory role in thymopoiesis. In addition, studies in mice suggest that the protein encoded by this gene may inhibit the expression of Fas ligand and IL2. Two transcript variants encoding different isoforms have been found for this gene. [provided by RefSeq, Jul 2008],function:Orphan nuclear receptor.,similarity:Belongs to the nuclear hormone receptor family.,similarity:Belongs to the nuclear hormone receptor family. NR1 subfamily.,similarity:Contains 1 nuclear receptor DNA-binding domain.,tissue specificity:Highly expressed in skeletal muscle.,

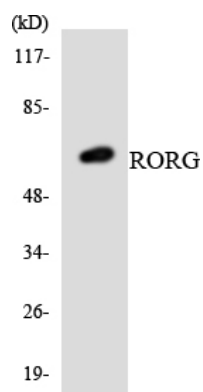
Research Area

Signal Transduction; Growth Factors/Hormones; Hormones; Epigenetics and Nuclear Signaling; Nuclear Signaling Pathways; Nuclear Receptors; Corticoid; Transcription; Transcription Factors; Neuroscience; Development

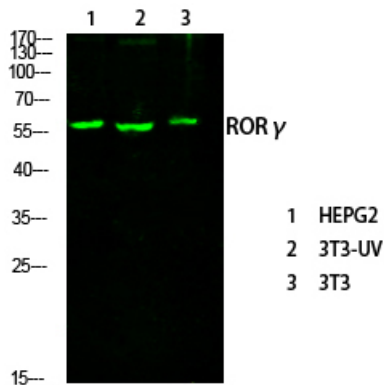
Image Data



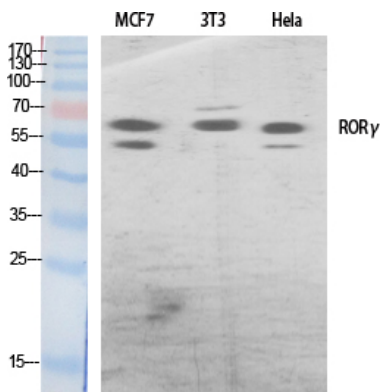
Western blot analysis of RORG Antibody. The lane on the right is blocked with the RORG peptide.



Western blot analysis of the lysates from HeLa cells using RORG antibody.



Western Blot analysis of various cells using ROR γ Rabbit Polyclonal Antibody diluted at 1:1000 (4°C overnight) . Secondary antibody: Goat Anti-rabbit IgG IRDye 800 (diluted at 1:5000, 25°C, 1 hour)



Western Blot analysis of various cells using ROR γ Polyclonal Antibody diluted at 1:500 cells nucleus extracted by Minute TM Cytoplasmic and Nuclear Fractionation kit (SC-003, Invent biotech, MN, USA) .