
Product Name: RO60 Rabbit Polyclonal Antibody**Catalog #: APRab17302**

For research use only.

Summary

Description	Rabbit polyclonal Antibody
Host	Rabbit
Application	WB,IHC
Reactivity	Human,Rat,Mouse
Conjugation	Unconjugated
Modification	Unmodified
Isotype	IgG
Clonality	Polyclonal
Form	Liquid
Concentration	1mg/ml
Storage	Aliquot and store at -20°C (valid for 12 months). Avoid freeze/thaw cycles.
Shipping	Ice bags
Buffer	Liquid in PBS containing 50% glycerol, 0.5% protective protein and 0.02% New type preservative N.
Purification	Affinity purification

Application

Dilution Ratio	WB 1:500-1:2000,IHC 1:50-1:300
Molecular Weight	70kDa

Antigen Information

Gene Name	TROVE2 TROVE2; RO60; SSA2; 60 kDa SS-A/Ro ribonucleoprotein; 60 kDa Ro protein; 60 kDa
Alternative Names	ribonucleoprotein Ro; RoRNP; Ro 60 kDa autoantigen; Sjogren syndrome antigen A2; Sjogren syndrome type A antigen; SS-A; TROVE domain family member 2
Gene ID	6738.0
SwissProt ID	P10155
Immunogen	The antiserum was produced against synthesized peptide derived from human TROVE2. AA range:311-360

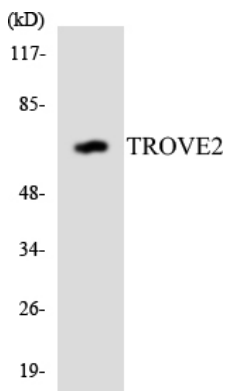
Background

disease:Sera from patients with systemic lupus erythematosus (SLE) often contain antibodies that react with the normal cellular SSA2 protein as if this antigen was foreign.,function:RNA-binding protein that binds to several small cytoplasmic RNA molecules known as Y RNAs. May stabilize these RNAs from degradation.,PTM:Phosphorylated upon DNA damage, probably by ATM or ATR.,similarity:Belongs to the Ro 60 kDa family.,similarity:Contains 1 TROVE domain.,subunit:Found in a complex with PUF60 and Y5 RNA. Interacts with RIP11.,disease:Sera from patients with systemic lupus erythematosus (SLE) often contain antibodies that react with the normal cellular SSA2 protein as if this antigen was foreign.,function:RNA-binding protein that binds to several small cytoplasmic RNA molecules known as Y RNAs. May stabilize these RNAs from degradation.,PTM:Phosphorylated upon DNA damage, probably by ATM or ATR.,similarity:Belongs to the Ro 60 kDa family.,similarity:Contains 1 TROVE domain.,subunit:Found in a complex with PUF60 and Y5 RNA. Interacts with RIP11.,

Research Area

Systemic lupus erythematosus;

Image Data



Western blot analysis of the lysates from HepG2 cells using TROVE2 antibody.