
Product Name: RNase Z2 Rabbit Polyclonal Antibody**Catalog #: APRab17278**

For research use only.

Summary

Description	Rabbit polyclonal Antibody
Host	Rabbit
Application	IHC,ICC/IF,ELISA
Reactivity	Human,Rat,Mouse
Conjugation	Unconjugated
Modification	Unmodified
Isotype	IgG
Clonality	Polyclonal
Form	Liquid
Concentration	1mg/ml
Storage	Aliquot and store at -20°C (valid for 12 months). Avoid freeze/thaw cycles.
Shipping	Ice bags
Buffer	Liquid in PBS containing 50% glycerol, 0.5% protective protein and 0.02% New type preservative N.
Purification	Affinity purification

Application

Dilution Ratio IHC 1:100-1:300,ICC/IF 1:50-1:200,ELISA 1:5000-1:20000

Molecular Weight

Antigen Information

Gene Name	ELAC2
Alternative Names	ELAC2; HPC2; Zinc phosphodiesterase ELAC protein 2; ElaC homolog protein 2; Heredity prostate cancer protein 2; Ribonuclease Z 2; RNase Z 2; tRNA 3 endonuclease 2; tRNase Z 2
Gene ID	60528.0
SwissProt ID	Q9BQ52
Immunogen	The antiserum was produced against synthesized peptide derived from human ELAC2. AA range:161-210

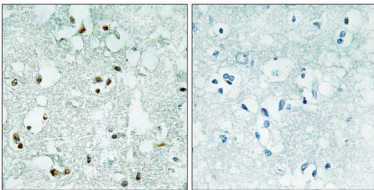
Background

The protein encoded by this gene has a C-terminal domain with tRNA 3' processing endoribonuclease activity, which catalyzes the removal of the 3' trailer from precursor tRNAs. The protein also interacts with activated Smad family member 2 (Smad2) and its nuclear partner forkhead box H1 (also known as FAST-1), and reduced expression can suppress transforming growth factor-beta induced growth arrest. Mutations in this gene result in an increased risk of prostate cancer. Multiple transcript variants encoding different isoforms have been found for this gene. [provided by RefSeq, Sep 2009],catalytic activity:Endonucleolytic cleavage of RNA, removing extra 3' nucleotides from tRNA precursor, generating 3' termini of tRNAs. A 3'-hydroxy group is left at the tRNA terminus and a 5'-phosphoryl group is left at the trailer molecule.,cofactor:Zinc.,disease:Defects in ELAC2 are involved in prostate cancer (CaP) [MIM:176807],.function:Zinc phosphodiesterase, which displays some tRNA 3'-processing endonuclease activity. Probably involved in tRNA maturation, by removing a 3'-trailer from precursor tRNA.,similarity:Belongs to the RNase Z family.,subunit:Homodimer.,tissue specificity:Widely expressed. Highly expressed in heart, placenta, liver, skeletal muscle, kidney, pancreas, testis and ovary. Weakly expressed in brain, lung, spleen, thymus, prostate, small intestine, colon and leukocytes.,

Research Area

Epigenetics and Nuclear Signaling; DNA / RNA; RNA Processing; Cancer; Cell cycle; Cell cycle inhibitors

Image Data



Immunohistochemistry analysis of paraffin-embedded human brain, using ELAC2 Antibody. The picture on the right is blocked with the synthesized peptide.