

---

**Product Name: Rim4 Rabbit Polyclonal Antibody****Catalog #: APRab17195**

For research use only.

**Summary**

<b>Description</b>	Rabbit polyclonal Antibody
<b>Host</b>	Rabbit
<b>Application</b>	WB,IHC,ICC/IF,ELISA
<b>Reactivity</b>	Human,Mouse,Rat
<b>Conjugation</b>	Unconjugated
<b>Modification</b>	Unmodified
<b>Isotype</b>	IgG
<b>Clonality</b>	Polyclonal
<b>Form</b>	Liquid
<b>Concentration</b>	1mg/ml
<b>Storage</b>	Aliquot and store at -20°C (valid for 12 months). Avoid freeze/thaw cycles.
<b>Shipping</b>	Ice bags
<b>Buffer</b>	Liquid in PBS containing 50% glycerol, 0.5% protective protein and 0.02% New type preservative N.
<b>Purification</b>	Affinity purification

**Application**

<b>Dilution Ratio</b>	WB 1:500-1:2000,IHC 1:100-1:300,ICC/IF 1:50-1:200,ELISA 1:10000-1:20000
<b>Molecular Weight</b>	30kDa

**Antigen Information**

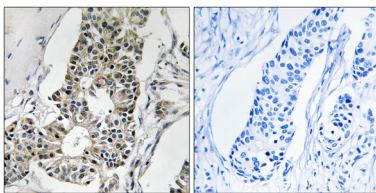
<b>Gene Name</b>	RIMS4
<b>Alternative Names</b>	RIMS4; C20orf190; Regulating synaptic membrane exocytosis protein 4; RIM4 gamma; Rab3-interacting molecule 4; RIM 4
<b>Gene ID</b>	140730.0
<b>SwissProt ID</b>	Q9H426
<b>Immunogen</b>	The antiserum was produced against synthesized peptide derived from human RIMS4. AA range:33-82

**Background**

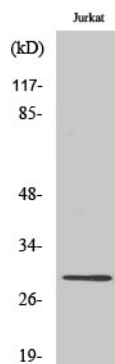
caution:Does not bind Rab-3.,function:Regulates synaptic membrane exocytosis.,PTM:Phosphorylated upon DNA damage, probably by ATM or ATR.,similarity:Contains 1 C2 domain.,subunit:Binds PPFIA3.,caution:Does not bind Rab-3.,function:Regulates synaptic membrane exocytosis.,PTM:Phosphorylated upon DNA damage, probably by ATM or ATR.,similarity:Contains 1 C2 domain.,subunit:Binds PPFIA3.,

## Research Area

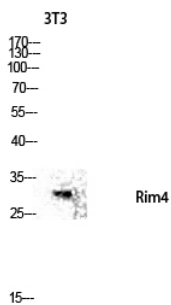
## Image Data



Immunohistochemistry analysis of paraffin-embedded human breast carcinoma tissue, using RIMS4 Antibody. The picture on the right is blocked with the synthesized peptide.



Western Blot analysis of various cells using Rim4 Polyclonal Antibody diluted at 1 : 500



Western blot analysis of 3T3 lysis using Rim4 antibody. Antibody was diluted at 1:500