

Product Name: Ribosomal Protein S6 Rabbit Polyclonal Antibody**Catalog #: APRab17189**

For research use only.

Summary

Description	Rabbit polyclonal Antibody
Host	Rabbit
Application	WB,IHC,ICC/IF,ELISA
Reactivity	Human,Mouse,Rat
Conjugation	Unconjugated
Modification	Unmodified
Isotype	IgG
Clonality	Polyclonal
Form	Liquid
Concentration	1mg/ml
Storage	Aliquot and store at -20°C (valid for 12 months). Avoid freeze/thaw cycles.
Shipping	Ice bags
Buffer	Liquid in PBS containing 50% glycerol, 0.5% protective protein and 0.02% New type preservative N.
Purification	Affinity purification

Application

Dilution Ratio	WB 1:500-1:2000,IHC 1:100-1:300,ICC/IF 1:200-1:1000,ELISA 1:5000-1:10000
Molecular Weight	28kDa

Antigen Information

Gene Name	RPS6
Alternative Names	RPS6; OK/SW-cl.2; 40S ribosomal protein S6; Phosphoprotein NP33
Gene ID	6194.0
SwissProt ID	P62753
Immunogen	The antiserum was produced against synthesized peptide derived from human S6 Ribosomal Protein. AA range:191-240

Background

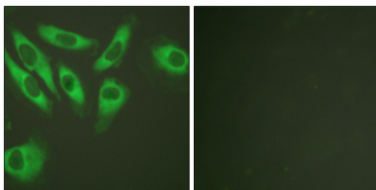
Ribosomes, the organelles that catalyze protein synthesis, consist of a small 40S subunit and a large 60S subunit. Together

these subunits are composed of 4 RNA species and approximately 80 structurally distinct proteins. This gene encodes a cytoplasmic ribosomal protein that is a component of the 40S subunit. The protein belongs to the S6E family of ribosomal proteins. It is the major substrate of protein kinases in the ribosome, with subsets of five C-terminal serine residues phosphorylated by different protein kinases. Phosphorylation is induced by a wide range of stimuli, including growth factors, tumor-promoting agents, and mitogens. Dephosphorylation occurs at growth arrest. The protein may contribute to the control of cell growth and proliferation through the selective translation of particular classes of mRNA. As is typical for genes encoding ribosomal proteins, there are multiple processedfunction:May play an important role in controlling cell growth and proliferation through the selective translation of particular classes of mRNA.,PTM:Ribosomal protein S6 is the major substrate of protein kinases in eukaryote ribosomes. The phosphorylation is stimulated by growth factors, tumor promoting agents, and mitogens. It is dephosphorylated at growth arrest.,similarity:Belongs to the ribosomal protein S6e family.,

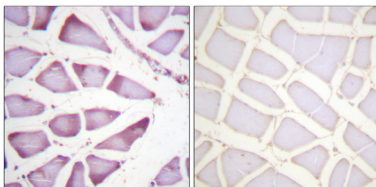
Research Area

Ribosome;mTOR;Insulin_Receptor;

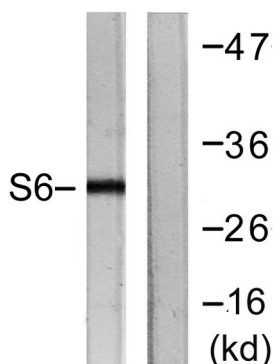
Image Data



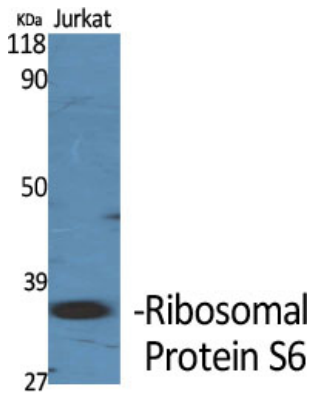
Immunofluorescence analysis of HeLa cells, using S6 Ribosomal Protein Antibody. The picture on the right is blocked with the synthesized peptide.



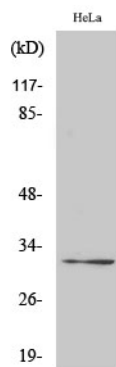
Immunohistochemistry analysis of paraffin-embedded human skeletal muscle tissue, using S6 Ribosomal Protein Antibody. The picture on the right is blocked with the synthesized peptide.



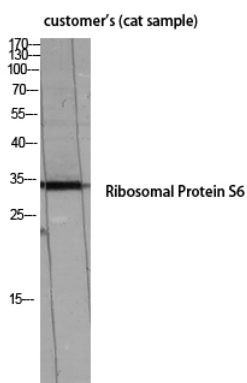
Western blot analysis of lysates from HeLa cells, treated with TNF- α 20ng/ml 2', using S6 Ribosomal Protein Antibody. The lane on the right is blocked with the synthesized peptide.



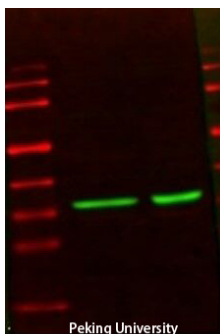
Western Blot analysis of various cells using Ribosomal Protein S6 Polyclonal Antibody diluted at 1: 2000



Western Blot analysis of HeLa cells using Ribosomal Protein S6 Polyclonal Antibody diluted at 1: 2000



Western Blot analysis of customer 's (cat sample) using Ribosomal Protein S6 Polyclonal Antibody diluted at 1: 2000



Rps6

The picture was kindly provided by our customer