

---

**Product Name: Ribosomal Protein S12 Rabbit Polyclonal Antibody****Catalog #: APRab17173**

For research use only.

**Summary**

<b>Description</b>	Rabbit polyclonal Antibody
<b>Host</b>	Rabbit
<b>Application</b>	WB,IHC,ICC/IF,ELISA
<b>Reactivity</b>	Human,Mouse,Rat
<b>Conjugation</b>	Unconjugated
<b>Modification</b>	Unmodified
<b>Isotype</b>	IgG
<b>Clonality</b>	Polyclonal
<b>Form</b>	Liquid
<b>Concentration</b>	1mg/ml
<b>Storage</b>	Aliquot and store at -20°C (valid for 12 months). Avoid freeze/thaw cycles.
<b>Shipping</b>	Ice bags
<b>Buffer</b>	Liquid in PBS containing 50% glycerol, 0.5% protective protein and 0.02% New type preservative N.
<b>Purification</b>	Affinity purification

**Application**

<b>Dilution Ratio</b>	WB 1:500-1:2000,IHC 1:100-1:300,ICC/IF 1:200-1:1000,ELISA 1:20000-1:40000
<b>Molecular Weight</b>	15kDa

**Antigen Information**

<b>Gene Name</b>	RPS12
<b>Alternative Names</b>	RPS12; 40S ribosomal protein S12
<b>Gene ID</b>	6206.0
<b>SwissProt ID</b>	P25398
<b>Immunogen</b>	The antiserum was produced against synthesized peptide derived from human RPS12. AA range:83-132

**Background**

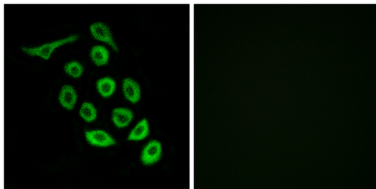
Ribosomes, the organelles that catalyze protein synthesis, consist of a small 40S subunit and a large 60S subunit. Together

these subunits are composed of 4 RNA species and approximately 80 structurally distinct proteins. This gene encodes a ribosomal protein that is a component of the 40S subunit. The protein belongs to the S12E family of ribosomal proteins. It is located in the cytoplasm. Increased expression of this gene in colorectal cancers compared to matched normal colonic mucosa has been observed. As is typical for genes encoding ribosomal proteins, there are multiple processed pseudogenes of this gene dispersed through the genome. [provided by RefSeq, Jul 2008],similarity:Belongs to the ribosomal protein S12e family.,

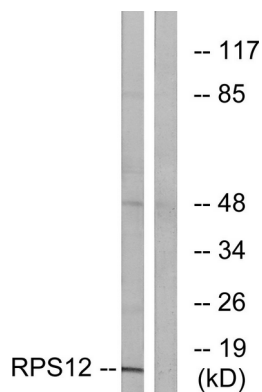
## Research Area

Ribosome;

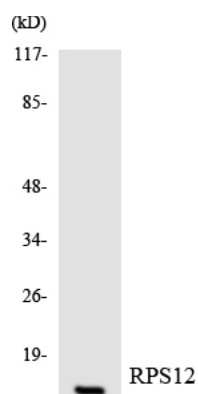
## Image Data



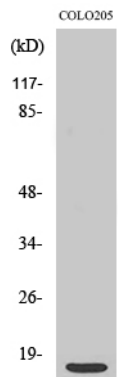
Immunofluorescence analysis of A549 cells, using RPS12 Antibody. The picture on the right is blocked with the synthesized peptide.



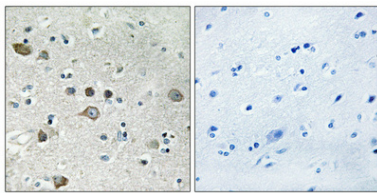
Western blot analysis of lysates from COLO cells, using RPS12 Antibody. The lane on the right is blocked with the synthesized peptide.



Western blot analysis of the lysates from HUVEC cells using RPS12 antibody.



Western Blot analysis of various cells using Ribosomal Protein S12 Polyclonal Antibody



Immunohistochemical analysis of paraffin-embedded Human brain. Antibody was diluted at 1:100 (4°, overnight) . High-pressure and temperature Tris-EDTA, pH8.0 was used for antigen retrieval. Negative control (right) obtained from antibody was pre-absorbed by immunogen peptide.