

Product Name: Ribosomal Protein LP2 Rabbit Polyclonal Antibody**Catalog #: APRab17171**

For research use only.

Summary

Description	Rabbit polyclonal Antibody
Host	Rabbit
Application	IHC, ICC/IF, ELISA
Reactivity	Human, Mouse, Rat
Conjugation	Unconjugated
Modification	Unmodified
Isotype	IgG
Clonality	Polyclonal
Form	Liquid
Concentration	1mg/ml
Storage	Aliquot and store at -20°C (valid for 12 months). Avoid freeze/thaw cycles.
Shipping	Ice bags
Buffer	Liquid in PBS containing 50% glycerol, 0.5% protective protein and 0.02% New type preservative N.
Purification	Affinity purification

Application

Dilution Ratio IHC 1:100-1:300, ICC/IF 1:50-1:200, ELISA 1:20000-1:40000

Molecular Weight

Antigen Information

Gene Name	RPLP2
Alternative Names	RPLP2; D11S2243E; RPP2; 60S acidic ribosomal protein P2; Renal carcinoma antigen NY-REN-44
Gene ID	6181.0
SwissProt ID	P05387
Immunogen	The antiserum was produced against synthesized peptide derived from human RPLP2. AA range:21-70

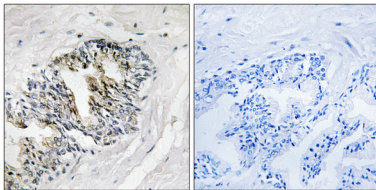
Background

Ribosomes, the organelles that catalyze protein synthesis, consist of a small 40S subunit and a large 60S subunit. Together these subunits are composed of 4 RNA species and approximately 80 structurally distinct proteins. This gene encodes a ribosomal phosphoprotein that is a component of the 60S subunit. The protein, which is a functional equivalent of the E. coli L7/L12 ribosomal protein, belongs to the L12P family of ribosomal proteins. It plays an important role in the elongation step of protein synthesis. Unlike most ribosomal proteins, which are basic, the encoded protein is acidic. Its C-terminal end is nearly identical to the C-terminal ends of the ribosomal phosphoproteins P0 and P1. The P2 protein can interact with P0 and P1 to form a pentameric complex consisting of P1 and P2 dimers, and a P0 monomer. The protein is located in the cytoplasm. As is typical for genesfunction:Plays an important role in the elongation step of protein synthesis.,similarity:Belongs to the ribosomal protein L12P family.,subunit:P1 and P2 exist as dimers at the large ribosomal subunit,

Research Area

Ribosome;

Image Data



Immunohistochemistry analysis of paraffin-embedded human prostate carcinoma tissue, using RPLP2 Antibody. The picture on the right is blocked with the synthesized peptide.