
Product Name: Ribosomal Protein L39 Rabbit Polyclonal Antibody**Catalog #: APRab17164**

For research use only.

Summary

Description	Rabbit polyclonal Antibody
Host	Rabbit
Application	WB,IHC,ICC/IF,ELISA
Reactivity	Human,Mouse,Rat
Conjugation	Unconjugated
Modification	Unmodified
Isotype	IgG
Clonality	Polyclonal
Form	Liquid
Concentration	1mg/ml
Storage	Aliquot and store at -20°C (valid for 12 months). Avoid freeze/thaw cycles.
Shipping	Ice bags
Buffer	Liquid in PBS containing 50% glycerol, 0.5% protective protein and 0.02% New type preservative N.
Purification	Affinity purification

Application

Dilution Ratio	WB 1:500-1:2000,IHC 1:100-1:300,ICC/IF 1:200-1:1000,ELISA 1:20000-1:40000
Molecular Weight	6kDa

Antigen Information

Gene Name	RPL39
Alternative Names	RPL39; 60S ribosomal protein L39
Gene ID	6170.0
SwissProt ID	P62891
Immunogen	The antiserum was produced against synthesized peptide derived from human RPL39. AA range:1-50

Background

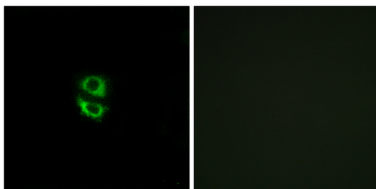
Ribosomes, the organelles that catalyze protein synthesis, consist of a small 40S subunit and a large 60S subunit. Together

these subunits are composed of 4 RNA species and approximately 80 structurally distinct proteins. This gene encodes a ribosomal protein that is a component of the 60S subunit. The protein belongs to the S39E family of ribosomal proteins. It is located in the cytoplasm. In rat, the protein is the smallest, and one of the most basic, proteins of the ribosome. This gene is co-transcribed with the U69 small nucleolar RNA gene, which is located in its second intron. As is typical for genes encoding ribosomal proteins, there are multiple processed pseudogenes of this gene dispersed through the genome. [provided by RefSeq, Jul 2008],miscellaneous:This protein is the smallest and one of the most basic of the proteins in liver ribosomes.,similarity:Belongs to the ribosomal protein L39e family,.

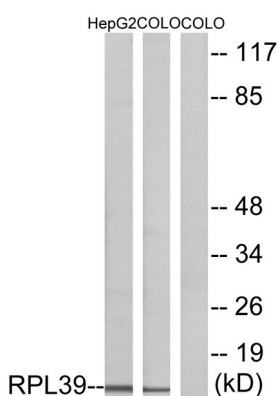
Research Area

Ribosome;

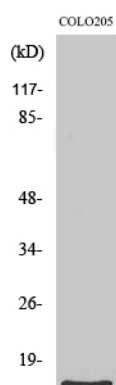
Image Data



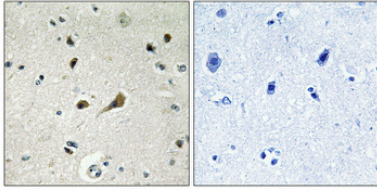
Immunofluorescence analysis of A549 cells, using RPL39 Antibody. The picture on the right is blocked with the synthesized peptide.



Western blot analysis of lysates from COLO and HepG2 cells, using RPL39 Antibody. The lane on the right is blocked with the synthesized peptide.



Western Blot analysis of various cells using Ribosomal Protein L39 Polyclonal Antibody



Immunohistochemical analysis of paraffin-embedded Human brain. Antibody was diluted at 1:100 (4°, overnight) . High-pressure and temperature Tris-EDTA, pH8.0 was used for antigen retrieval. Negative control (right) obtained from antibody was pre-absorbed by immunogen peptide.