

**Product Name: Ribosomal Protein L37 Rabbit Polyclonal Antibody****Catalog #: APRab17162**

For research use only.

**Summary**

<b>Description</b>	Rabbit polyclonal Antibody
<b>Host</b>	Rabbit
<b>Application</b>	IHC, ICC/IF, ELISA
<b>Reactivity</b>	Human, Mouse, Rat
<b>Conjugation</b>	Unconjugated
<b>Modification</b>	Unmodified
<b>Isotype</b>	IgG
<b>Clonality</b>	Polyclonal
<b>Form</b>	Liquid
<b>Concentration</b>	1mg/ml
<b>Storage</b>	Aliquot and store at -20°C (valid for 12 months). Avoid freeze/thaw cycles.
<b>Shipping</b>	Ice bags
<b>Buffer</b>	Liquid in PBS containing 50% glycerol, 0.5% protective protein and 0.02% New type preservative N.
<b>Purification</b>	Affinity purification

**Application**

**Dilution Ratio** IHC 1:100-1:300, ICC/IF 1:50-1:200, ELISA 1:5000-1:20000

**Molecular Weight**

**Antigen Information**

<b>Gene Name</b>	RPL37
<b>Alternative Names</b>	RPL37; 60S ribosomal protein L37; G1.16
<b>Gene ID</b>	6167.0
<b>SwissProt ID</b>	P61927
<b>Immunogen</b>	The antiserum was produced against synthesized peptide derived from human RPL37. AA range:21-70

**Background**

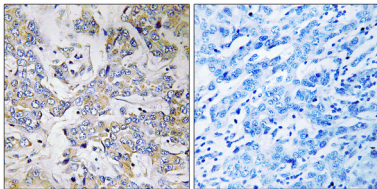
Ribosomes, the organelles that catalyze protein synthesis, consist of a small 40S subunit and a large 60S subunit. Together

these subunits are composed of 4 RNA species and approximately 80 structurally distinct proteins. This gene encodes a ribosomal protein that is a component of the 60S subunit. The protein belongs to the L37E family of ribosomal proteins. It is located in the cytoplasm. The protein contains a C2C2-type zinc finger-like motif. As is typical for genes encoding ribosomal proteins, there are multiple processed pseudogenes of this gene dispersed through the genome. [provided by RefSeq, Jul 2008],cofactor: Binds 1 zinc ion per subunit.,function: Binds to the 23S rRNA.,similarity: Belongs to the ribosomal protein L37e family.,

## Research Area

Ribosome;

## Image Data



Immunohistochemistry analysis of paraffin-embedded human breast carcinoma tissue, using RPL37 Antibody. The picture on the right is blocked with the synthesized peptide.