

Product Name: Ribosomal Protein L36 Rabbit Polyclonal Antibody**Catalog #: APRab17161**

For research use only.

Summary

Description	Rabbit polyclonal Antibody
Host	Rabbit
Application	WB,IHC,ICC/IF,ELISA
Reactivity	Human,Mouse,Rat
Conjugation	Unconjugated
Modification	Unmodified
Isotype	IgG
Clonality	Polyclonal
Form	Liquid
Concentration	1mg/ml
Storage	Aliquot and store at -20°C (valid for 12 months). Avoid freeze/thaw cycles.
Shipping	Ice bags
Buffer	Liquid in PBS containing 50% glycerol, 0.5% protective protein and 0.02% New type preservative N.
Purification	Affinity purification

Application

Dilution Ratio	WB 1:500-1:2000,IHC 1:100-1:300,ICC/IF 1:200-1:1000,ELISA 1:20000-1:40000
Molecular Weight	12kDa

Antigen Information

Gene Name	RPL36
Alternative Names	RPL36; 60S ribosomal protein L36
Gene ID	25873.0
SwissProt ID	Q9Y3U8
Immunogen	The antiserum was produced against synthesized peptide derived from human RPL36. AA range:51-100

Background

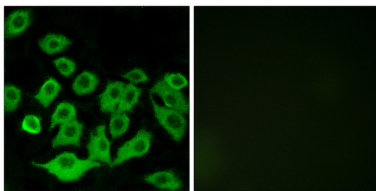
Ribosomes, the organelles that catalyze protein synthesis, consist of a small 40S subunit and a large 60S subunit. Together

these subunits are composed of 4 RNA species and approximately 80 structurally distinct proteins. This gene encodes a ribosomal protein that is a component of the 60S subunit. The protein belongs to the L36E family of ribosomal proteins. It is located in the cytoplasm. Transcript variants derived from alternative splicing exist; they encode the same protein. As is typical for genes encoding ribosomal proteins, there are multiple processed pseudogenes of this gene dispersed through the genome. [provided by RefSeq, Jul 2008],caution:Could be the product of a pseudogene.,similarity:Belongs to the ribosomal protein L36e family.,

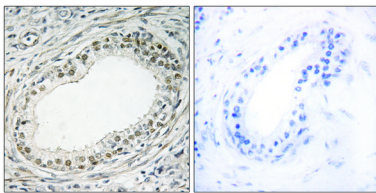
Research Area

Ribosome;

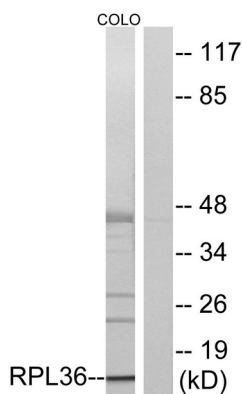
Image Data



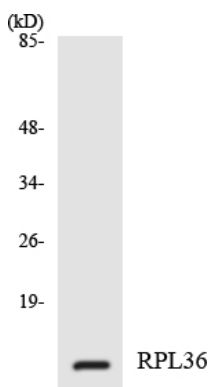
Immunofluorescence analysis of A549 cells, using RPL36 Antibody. The picture on the right is blocked with the synthesized peptide.



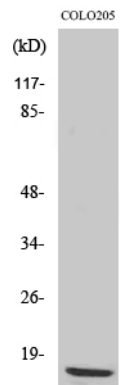
Immunohistochemistry analysis of paraffin-embedded human prostate carcinoma tissue, using RPL36 Antibody. The picture on the right is blocked with the synthesized peptide.



Western blot analysis of lysates from COLO cells, using RPL36 Antibody. The lane on the right is blocked with the synthesized peptide.



Western blot analysis of the lysates from 293 cells using RPL36 antibody.



Western Blot analysis of various cells using Ribosomal Protein L36 Polyclonal Antibody diluted at 1 : 500