

Product Name: Ribosomal Protein L3 Rabbit Polyclonal Antibody**Catalog #: APRab17156**

For research use only.

Summary

Description	Rabbit polyclonal Antibody
Host	Rabbit
Application	WB,IHC,ICC/IF,ELISA
Reactivity	Human,Mouse,Rat
Conjugation	Unconjugated
Modification	Unmodified
Isotype	IgG
Clonality	Polyclonal
Form	Liquid
Concentration	1mg/ml
Storage	Aliquot and store at -20°C (valid for 12 months). Avoid freeze/thaw cycles.
Shipping	Ice bags
Buffer	Liquid in PBS containing 50% glycerol, 0.5% protective protein and 0.02% New type preservative N.
Purification	Affinity purification

Application

Dilution Ratio	WB 1:500-1:2000,IHC 1:100-1:300,ICC/IF 1:50-1:200,ELISA 1:10000-1:20000
Molecular Weight	46kDa

Antigen Information

Gene Name	RPL3
Alternative Names	RPL3; OK/SW-cl.32; 60S ribosomal protein L3; HIV-1 TAR RNA-binding protein B; TARBP-B
Gene ID	6122.0
SwissProt ID	P39023
Immunogen	The antiserum was produced against synthesized peptide derived from human RPL3. AA range:211-260

Background

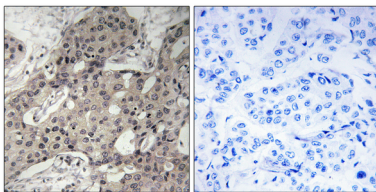
Ribosomes, the complexes that catalyze protein synthesis, consist of a small 40S subunit and a large 60S subunit. Together

these subunits are composed of 4 RNA species and approximately 80 structurally distinct proteins. This gene encodes a ribosomal protein that is a component of the 60S subunit. The protein belongs to the L3P family of ribosomal proteins and it is located in the cytoplasm. The protein can bind to the HIV-1 TAR mRNA, and it has been suggested that the protein contributes to tat-mediated transactivation. This gene is co-transcribed with several small nucleolar RNA genes, which are located in several of this gene's introns. Alternate transcriptional splice variants, encoding different isoforms, have been characterized. As is typical for genes encoding ribosomal proteins, there are multiple processed pseudogenes of this gene dispersed through the genome. [provided by RefSeq, Julcaution:The sequence shown here is derived from an Ensembl automatic analysis pipeline and should be considered as preliminary data.,function:The L3 protein is a component of the large subunit of cytoplasmic ribosomes.,similarity:Belongs to the ribosomal protein L3P family.,

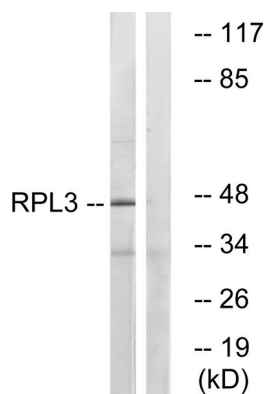
Research Area

Ribosome;

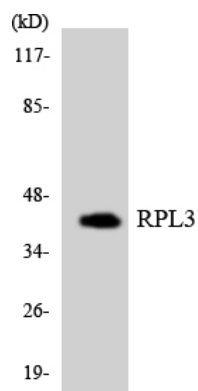
Image Data



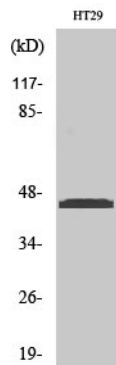
Immunohistochemistry analysis of paraffin-embedded human breast carcinoma tissue, using RPL3 Antibody. The picture on the right is blocked with the synthesized peptide.



Western blot analysis of lysates from HT-29 cells, using RPL3 Antibody. The lane on the right is blocked with the synthesized peptide.



Western blot analysis of the lysates from HUVEC cells using RPL3 antibody.



Western Blot analysis of various cells using Ribosomal Protein L3 Polyclonal Antibody